

KLF Holdings Pty Ltd Recycling Facility

Noise Compliance Report - Quarter 3 2022

Prepared for KLF Holdings Pty Ltd

November 2022

KLF Holdings Pty Ltd Recycling Facility

Noise Compliance Report - Quarter 3 2022

KLF Holdings Pty Ltd

E220281 RP2022Q2

November 2022

Version	Date	Prepared by	Approved by	Comments
1	14 November 2022	Jared Blackburn	Najah Ishac	

Approved by



Najah Ishac

Director, National Acoustics Leader

22 November 2022

Ground floor 20 Chandos Street

St Leonards NSW 2065

PO Box 21

St Leonards NSW 1590

This report has been prepared in accordance with the brief provided by KLF Holdings Pty Ltd and has relied upon the information collected at the time and under the conditions specified in the report. All findings, conclusions or recommendations contained in the report are based on the aforementioned circumstances. The report is for the use of KLF Holdings Pty Ltd and no responsibility will be taken for its use by other parties. KLF Holdings Pty Ltd may, at its discretion, use the report to inform regulators and the public.

© Reproduction of this report for educational or other non-commercial purposes is authorised without prior written permission from EMM provided the source is fully acknowledged. Reproduction of this report for resale or other commercial purposes is prohibited without EMM's prior written permission.

TABLE OF CONTENTS

1	Introduction	1
2	Noise limits and monitoring requirements	2
2.1	Noise Limits	2
2.2	Meteorological conditions	2
3	Assessment methodology	4
3.1	Attended noise monitoring	4
3.2	Instrumentation	4
3.3	Weather conditions	6
3.4	Site operating hours	6
4	Monitoring data and discussion	7
5	Conclusion	13
	Glossary	14

Appendices

Appendix A	EPL 12700	A.1
Appendix B	Calibration certificates	B.1

Tables

Table 2.1	Noise limits	2
Table 2.2	Applicable meteorological conditions	2
Table 3.1	Attended noise monitoring locations	4
Table 3.2	Stability categories and vertical temperature gradients	6
Table 4.1	Attended noise monitoring results – Q2 2022, 14-15 June	8
Table G.1	Glossary of acoustic terms	14
Table G.2	Perceived change in noise	15

Figures

Figure 3.1	Site locality and attended noise monitoring locations	5
Figure G.1	Common noise levels	16

1 Introduction

EMM Consulting Pty Limited (EMM) has been engaged to complete quarterly attended compliance noise monitoring for the Camelia Waste Recycling Facility (the site) on behalf of KLF Holdings Pty Limited (KLF). This quarterly monitoring is a requirement as detailed in the site's Environment Protection Licence (12700) dated 20 July 2021.

This report presents the results and findings of Quarter 3 2022 attended noise monitoring conducted during the day, evening and night periods of 2 and 3 November 2022. EMM acknowledges the attended noise monitoring was conducted outside of the regular Q3 period. This was due to heavy rainfall and weather conditions throughout the Q3 period.

The following documents were referenced as part of this assessment:

- KLF Holdings Pty Ltd Environment Protection Licence (EPL) 12700 (20 July 2021);
- AS 1055.2018 Acoustics - Description and measurement of environmental noise;
- Environment Protection Authority (EPA), Noise Policy for Industry (NPfi) (2017); and
- Environment Protection Authority (EPA), Road Noise Policy (RNP) (2011).

Technical terms used in this report are explained in the glossary.

2 Noise limits and monitoring requirements

Noise assessment criteria for the site are provided in the site's EPL. These are specified for day, evening and night periods at locations which are representative of residences potentially most impacted by site noise. Pages from the site's EPL pertaining to noise are shown in Appendix A.

2.1 Noise Limits

Condition L3.1 of the site's EPL nominates noise limits KLF Camelia, which are reproduced in Table 2.1.

Table 2.1 Noise limits

Location	Noise limits, dB $L_{Aeq,15min}$			Noise limits, dB L_{AFmax}
	Day	Evening	Night	Night
523-530 John Street Rydalmere	50	48	43	59
28 & 30 Sylvia Street Rydalmere, 33 Nowill Street Rydalmere	50	48	43	59
37-45 John Street Rydalmere	50	48	43	59
22 & 24 Milton Street Rydalmere, 33 & 35 John Street Rydalmere	50	48	43	59

Notes: 1. Day is the period from 7 am to 6 pm Monday to Saturday and 8 am to 6 pm Sunday and public holidays. Evening is the period from 6 pm to 10 pm. Night is the period from 10 pm to 7 am Monday to Saturday and 10 pm to 8 am Sunday and public holidays.

2.2 Meteorological conditions

Condition L3.2 of the EPL states the meteorological conditions which the noise limits apply under:

- L3.2 Noise-enhancing meteorological conditions:
- The noise limits set out in condition L3.1 apply under the meteorological conditions listed in the table below.
 - For those meteorological conditions not referred to in condition L3.2(a) table, the noise limits that apply are the noise limits in conditions L3.1 table plus 5 dB.

The table from Condition L3.2 is reproduced in Table 2.2 below.

Table 2.2 Applicable meteorological conditions

Assessment period	Meteorological conditions
Day	Stability Categories A, B, C and D with wind speeds up to and including 3 m/s at 10 m above ground level.
Evening	Stability Categories A, B, C and D with wind speeds up to and including 3 m/s at 10 m above ground level.
Night	Stability Categories A, B, C and D with wind speeds up to and including 3 m/s at 10 m above ground level; or Stability category E and F with wind speeds up to and including 2 m/s at 10 m above ground level.

Condition L3.4 specifies the source of meteorological data to be used and method for determining stability categories:

- L3.4 For the purpose of condition L3.2:
 - a) The meteorological conditions are to be determined from meteorological data obtained from the meteorological weather station identified as Bureau of Meteorology AWS at Sydney Olympic Park, NSW (Station no 066212).
 - b) Stability category shall be determined using the following method from Fact Sheet D of the Noise Policy for Industry (NSW EPA, 2017):
 - i. Use of sigma-theta data (section D1.4).

3 Assessment methodology

3.1 Attended noise monitoring

To quantify noise emissions from the site, 15-minute attended noise surveys were completed at monitoring locations to represent the locations referenced in Condition L3.1 of the site's EPL. Three attended noise monitoring locations were chosen to represent the most affected residences in proximity to the site, it is anticipated that any residences located further from the site would experience lesser or similar noise levels. The attended noise monitoring locations and their coordinates are listed in Table 3.1 and shown in Figure 3.1.

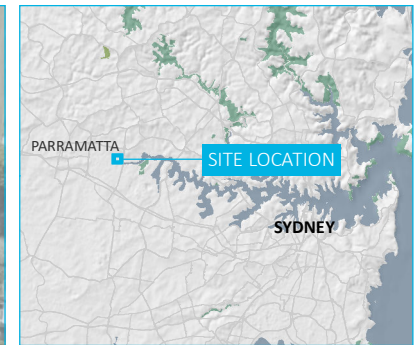
Table 3.1 Attended noise monitoring locations

Monitoring location	Description	Location	GDA94/MGA56	
			Easting (m)	Northing (m)
A1	Approximately 200 m east of the site	530 John Street, Rydalmere	319369	6255948
A2	Approximately 225 m northeast of the site	45 John Street, Rydalmere	319319	6256051
A3	Approximately 260 m north of the site	24 Milton Street, Rydalmere	319230	6256149

3.2 Instrumentation

A Brüel & Kjær Type 2250 sound level meter (serial number 3008201) was used to conduct 15-minute attended measurements and record 1/3 octave band centre frequency and statistical noise indices. The sound analyser was calibrated before and on completion of the survey using a Svantek SV36 calibrator (s/n 86311). The instruments were within their NATA laboratory calibration period during the time of these readings. Refer to Appendix B for calibration certificates.

\\lemmsvr1\emms3\2021\E210583 - KLF Noise Monitoring\8 GIS\02 Maps\A001 - AttendedNoiseMonitoring_202111029_01.mxd 1/11/2021



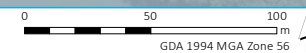
- KEY**
- Ⓐ Noise measurement location - attended
 - Site boundary
 - Named waterbody
- INSET KEY**
- Major road
 - NPWS reserve
 - State forest

Site locality and attended noise monitoring locations

KLF Holdings Camelia
Quarterly noise compliance
Figure 3.1



Source: EMM (2021); MetroMap (2021); DFSI (2017); GA (2011); ASGC (2006)



3.3 Weather conditions

Weather data for the monitoring period was sourced from the Bureau of Meteorology (BoM) Automated Weather Station (AWS) located at Sydney Olympic Park (Station ID 066212). Wind speeds are stated with reference to a height of 10 m above ground level (AGL).

The presence of temperature inversion conditions was determined for the monitoring period in accordance with the Sigma Theta method specified in Fact Sheet D of the NPfl (EPA 2017). Table 3.2 is an excerpt from Fact Sheet D of the NPfl (EPA 2017) showing the range of vertical temperature gradients for each Pasquill-Guilford stability category.

Table 3.2 Stability categories and vertical temperature gradients

Stability category	Range of vertical temperature gradient, DT/DZ (°C/100 m)
A	$DT/DZ < -1.9$
B	$-1.9 \leq DT/DZ < -1.7$
C	$-1.7 \leq DT/DZ < -1.5$
D	$-1.5 \leq DT/DZ < -0.5$
E	$-0.5 \leq DT/DZ < 1.5$
F	$1.5 \leq DT/DZ < 4.0$
G	$DT/DZ \geq 4.0$

Source: NPfl (EPA 2017).

3.4 Site operating hours

The site typically operates from 4:30 am to 4:30 pm Monday to Friday and from 5:00 am to 1:00 pm on Saturdays (closed Sundays), with hours extended when demand and processing is required.

4 Monitoring data and discussion

Attended noise monitoring results are summarised in Table 4.1.

The weather data confirmed that EPL meteorological criteria (Condition L3.2) were exceeded during 16 of the 24 attended measurements.

In accordance with the EPL, noise limits for those periods were those listed in Condition L3.1 plus 5 dB. Average wind speed, wind direction, cloud cover and stability category present during each 15-minute attended measurement are provided in Table 4.1.

During the periods that site was operational, typical activities included:

- Night (5:30 am to 7:00 am):
 - front end loader;
 - two excavators; and
 - trucks tipping/being loaded out.
- Day (7:00 am to 6:00 pm):
 - front end loader;
 - two excavators;
 - processing plant;
 - one excavator loading processing plant;
 - one excavator loading residual material out; and
 - trucks tipping/being loaded out.
- The site was not operational during the evening (6:00 pm to 10:00 pm).

Site operations were audible during all attended measurements in the night and day periods, including the constant hum of processing plant and “bangs” and “clangs” of material handling. Site contributions were estimated using a combination of operator observations at the time of measurement, filtering of extraneous noise and the application of a low pass filter used to exclude extraneous higher frequency noise such as birdsong and insects. The site was not operating during the evening period on the days that monitoring took place.

Site contributions were compliant (below) EPL $L_{Aeq,15min}$ or within 1 - 2 dB of the criterion during all attended day period measurements. A 1 to 2 dB exceedance is considered by the EPA as negligible in accordance with Section 4.2 of the NPfl (EPA 2017). This is because a 1 to 2 dB change in noise level in an environmental context is indiscernible to the human ear.

Typical L_{Amax} noise levels from the site were caused by “bangs” from the excavator bucket impacts and material handling. The EPL L_{Amax} noise limit was not breached during any of the eight attended night period measurements.

Based on a detailed review and analysis of noise measurement data, there was no evidence of low frequency noise, tonality or any other modifying factors as defined in the NPfl (EPA 2017) at any monitoring location; therefore, modifying factor penalties were not applicable.

Table 4.1 **Attended noise monitoring results – Q3 2022, 02-03 November**

Location	Start time (period) ¹	Total noise levels, dB				Estimated site contribution, dB		EPL limits, dB		Meteorological conditions ²	Exceedance, dB		Notes
		L _{Amin}	L _{A90, 15min}	L _{Aeq, 15min}	L _{Amax}	L _{Aeq, 15min}	L _{Amax}	L _{Aeq, 15min}	L _{Amax}		L _{Aeq, 15min}	L _{Amax}	
A1	5:44 am (Night)	48	50	54	71	47	63	48 ³	64 ³	3 m/s WNW, Category E,	Nil	Nil	Site audible. Persistent debris handling, scoop impacts and constant hum of screening plant. Other noise included hum of other industry, birdsong and distant traffic (constant). Occasional local cars.
A1	6:01 am (Night)	49	51	55	72	47	56	48 ³	64 ³	3 6m/s WNW, Category D,	Nil	Nil	Site audible. Persistent debris handling, scoop impacts and constant hum of screening plant. Other noise included hum of other industry, birdsong, ferry pass by and distant traffic (constant).
A2	6:21 am (Night)	47	49	55	72	47	59	48 ³	64 ³	3 8m/s WNW, Category D,	Nil	Nil	Site audible. Persistent debris handling, scoop impacts and constant hum of screening plant.. Other noise included hum of other industry, aircraft pass by and distant traffic (constant).
A3	6:38 am (Night)	50	52	56	76	47	60	48 ³	64 ³	2.6 m/s WNW, Category F,	Nil	Nil	Site audible. Persistent debris handling, scoop impacts and constant hum of screening plant. Other noise included hum of other industry and distant traffic (constant). Aircraft and boat pass by.
A1	7:01 am (Day)	51	54	57	66	50	-	50	-	2.6 m/s WNW, Category A,	Nil	-	Site audible. Persistent debris handling, scoop impacts and constant hum of screening plant. Other noise included birdsong (dominant), hum of other industry and distant traffic (constant).
A1	7:16 am (Day)	52	55	57	74	50	-	50	-	2.9 m/s WNW, Category A,	Nil	-	Site audible. Persistent debris handling, scoop impacts and constant hum of screening plant. Other noise included birdsong , hum of other industry and distant traffic (constant).

Table 4.1 Attended noise monitoring results – Q3 2022, 02-03 November

Location	Start time (period) ¹	Total noise levels, dB				Estimated site contribution, dB		EPL limits, dB		Meteorological conditions ²	Exceedance, dB		Notes
		L _{Amin}	L _{A90, 15min}	L _{Aeq, 15min}	L _{Amax}	L _{Aeq, 15min}	L _{Amax}	L _{Aeq, 15min}	L _{Amax}		L _{Aeq, 15min}	L _{Amax}	
A2	7:35 am (Day)	50	53	56	72	50	-	50	-	2.9m/s WNW, Category A,	Nil	-	Site audible. Persistent debris handling, scoop impacts and constant hum of screening plant. Other noise included persistent birdsong (dominant), hum of other industry and distant traffic (constant). Aircraft pass by .
A2	7:51 am (Day)	50	52	55	68	51	-	55 ³	-	3.2 m/s WNW, Category A,	Nil	-	Site audible. Persistent debris handling, scoop impacts, brief alert siren and constant hum of screening plant.. Other noise included persistent birdsong (dominant), hum of other industry and distant traffic (constant). Pass by traffic .
A3	8:08 am (Day)	52	53	57	71	40	-	55 ³	-	3.2 m/s WNW, Category A,	Nil	-	Site audible. Persistent debris handling, scoop impacts and constant hum of screening plant.. Other noise included persistent birdsong (dominant), hum of other industry and distant traffic (constant).
A3	8:23 am (Day)	51	54	57	68	40	-	55 ³	-	3.3 m/s WNW, Category A,	Nil	-	Site audible. Persistent debris handling, scoop impacts and constant hum of screening plant.. Other noise included persistent birdsong (dominant), aircraft pass by, hum of other industry and distant traffic (constant).
A1	6:41 pm (Evening)	48	52	56	70	n/a	-	53 ³	-	2.81 m/s W, Category F,	Nil	-	Site not operating. Other noise included constant hum of other industry, boat pass by and persistent and distant traffic (constant). Occasional local cars.
A2	6:57 pm (Evening)	48	51	58	80	n/a	-	53 ³	-	2.6 m/s W, Category F,	Nil	-	Site not operating. Other noise included constant hum of other industry, aircraft passby and persistent and distant traffic (constant). Occasional local cars.

Table 4.1 **Attended noise monitoring results – Q3 2022, 02-03 November**

Location	Start time (period) ¹	Total noise levels, dB				Estimated site contribution, dB		EPL limits, dB		Meteorological conditions ²	Exceedance, dB		Notes
		L _{Amin}	L _{A90, 15min}	L _{Aeq, 15min}	L _{Amax}	L _{Aeq, 15min}	L _{Amax}	L _{Aeq, 15min}	L _{Amax}		L _{Aeq, 15min}	L _{Amax}	
A1	5:35 am (Night)	48	50	54	71	43	58	48 ³	64 ³	2.1 m/s NW, Category E,	Nil	Nil	Site audible. Persistent debris handling, scoop impacts and constant hum of screening plant.. Occasional reverse siren. Other noise included persistent birdsong (dominant), hum of other industry and distant traffic (constant).
A1	5:51 am (Night)	50	51	55	74	43	59	48 ³	64 ³	2.6 m/s NW, Category E,	Nil	Nil	Site audible. Persistent debris handling, scoop impacts and constant hum of screening plant. Other noise included persistent birdsong (dominant), aircraft pass, hum of other industry and distant traffic (constant).
A2	6:10 am (Night)	51	52	59	75	42	59	48 ³	64 ³	2.6 m/s NW, Category E,	Nil	Nil	Site audible only at certain times in measurement. Debris handling, scoop impacts and constant hum of screening plant. Other noise included persistent birdsong (dominant), hum of other industry and distant traffic (constant).
A3	6:27 am (Night)	49	51	56	69	40	55	43	59	2 m/s NW, Category F,	Nil	Nil	Site audible. Persistent debris handling, scoop impacts and constant hum of screening plant. Other noise included persistent birdsong (dominant), hum of other industry and distant traffic (constant). Occasional local traffic.
A1	7:14 am (Day)	50	52	55	70	51	-	50	-	2 m/s NW, Category A,	1	-	Site audible. Persistent debris handling, scoop impacts and constant hum of screening plant.. Occasional reverse sirens. Other noise included persistent birdsong (dominant), hum of other industry and distant traffic (constant). Occasional local cars. Ferry pass by

Table 4.1 **Attended noise monitoring results – Q3 2022, 02-03 November**

Location	Start time (period) ¹	Total noise levels, dB				Estimated site contribution, dB		EPL limits, dB		Meteorological conditions ²	Exceedance, dB		Notes
		L _{Amin}	L _{A90, 15min}	L _{Aeq, 15min}	L _{Amax}	L _{Aeq, 15min}	L _{Amax}	L _{Aeq, 15min}	L _{Amax}		L _{Aeq, 15min}	L _{Amax}	
A1	7:29 am (Day)	50	51	55	70	52	-	50	-	2.8 m/s W, Category A,	2	-	Site audible. Persistent debris handling, scoop impacts and constant hum of screening plant.. Occasional reverse sirens. Other noise included persistent birdsong (dominant), hum of other industry and distant traffic (constant). Occasional local cars and ferry pass by.
A2	7:47 am (Day)	48	50	59	81	40	-	55 ³	-	3.2 m/s W, Category A,	Nil	-	Site audible only at certain times in measurement. Debris handling, scoop impacts and constant hum of screening plant. Other noise included hum of other industry, aircraft and distant traffic (constant).
A2	8:01 am (Day)	49	51	58	77	50	-	55 ³	-	3.2 m/s W, Category A,	Nil	-	Site audible. Persistent debris handling, scoop impacts and constant hum of screening plant. Other noise included persistent birdsong (dominant), garbage truck operating locally, ferry pass by, hum of other industry and distant traffic (constant).
A3	8:19 am (Day)	52	54	57	75	44	-	50	-	2.8 m/s W, Category A,	Nil	-	Site audible inconsistently throughout measurement. Debris handling, scoop impacts. Steady state industrial hum is masked by local ambient noise. Other noise included persistent birdsong (dominant), activity from other industry and distant traffic (constant). Occasional local traffic and aircrafts.
A3	8:34 am (Day)	50	53	57	72	43	-	50	-	2.8 m/s W, Category A,	Nil	-	Site audible inconsistently. Debris handling, scoop impacts. Steady state industrial hum is masked by local ambient noise. Other noise included persistent birdsong (dominant), activity from other industry and distant traffic (constant). Occasional local traffic.

Table 4.1 **Attended noise monitoring results – Q3 2022, 02-03 November**

Location	Start time (period) ¹	Total noise levels, dB				Estimated site contribution, dB		EPL limits, dB		Meteorological conditions ²	Exceedance, dB		Notes
		L _{Amin}	L _{A90, 15min}	L _{Aeq, 15min}	L _{Amax}	L _{Aeq, 15min}	L _{Amax}	L _{Aeq, 15min}	L _{Amax}		L _{Aeq, 15min}	L _{Amax}	
A1	6:06 pm (Evening)	46	48	50	64	n/a	-	53 ³	-	3.3 m/s ESE, Category E,	Nil	-	Site not operating. Other noise included persistent birdsong (dominant), noise from other industry and distant traffic (constant). Occasional local cars.
A2	6:23 pm (Evening)	46	50	56	75	n/a	-	53 ³	-	2.6 m/s ESE, Category E,	Nil	-	Site not operating. Other noise included persistent birdsong (dominant), noise from other industry and distant traffic (constant). Occasional local cars.

- Notes:
1. Day is the period from 7 am to 6 pm Monday to Saturday and 8 am to 6 pm Sunday and public holidays. Evening is the period from 6 pm to 10 pm. Night is the period from 10 pm to 7 am Monday to Saturday and 10 pm to 8 am Sunday and public holidays.
 2. Weather data for the monitoring period was sourced from the Bureau of Meteorology (BoM) Automated Weather Station (AWS) located at Sydney Olympic Park (Station ID 066212). Wind speeds are stated with reference to a height of 10 m above ground level (AGL).
 3. In accordance with Condition L3.2, where meteorological conditions exceed those specified in Condition L3.2, the EPL limits for these periods are those listed in Condition L3.1 plus 5 dB.

5 Conclusion

EMM has completed a review of operational noise from the KLF Holdings Camelia site for Quarter 3, 2022.

Attended noise monitoring was conducted during the day, evening and night periods on 2 and 3 November 2022. The applicability of noise limits was assessed with reference to weather data from the BoM's Sydney Olympic Park AWS.

The site was operational during all day and night period attended measurements. The site was not operational during the evening.

Attended noise monitoring observations and results demonstrate that operational noise from the site was audible during all attended measurements. Site contributions were demonstrated to be compliant during 22 of the 24 samples captured at residences. A 1 - 2 dB exceedance of an EPL criterion was measured during two daytime measurements. A 1 to 2 dB exceedance is considered by the EPA as negligible in accordance with Section 4.2 of the NPfl (EPA 2017).

Maximum L_{Amax} noise events measured from the site were compliant with the EPL L_{Amax} noise limits during all attended measurements at night.

Glossary

Several technical terms are discussed in this report. These are explained in Table G.1.

Table G.1 Glossary of acoustic terms

Term	Description
dB	Noise is measured in units called decibels (dB). There are several scales for describing noise, the most common being the 'A-weighted' scale. This attempts to closely approximate the frequency response of the human ear.
L_{A1}	The 'A-weighted' noise level which is exceeded 1% of the time.
$L_{A1,1 \text{ minute}}$	The 'A-weighted' noise level exceeded for 1% of the specified time period of 1-minute.
L_{A10}	The 'A-weighted' noise level which is exceeded 10% of the time. It is approximately equivalent to the average of maximum noise level.
L_{A90}	Commonly referred to as the background noise level. The 'A-weighted' noise level exceeded 90% of the time.
L_{Aeq}	The energy average noise from a source. This is the equivalent continuous 'A-weighted' sound pressure level over a given period. The $L_{Aeq,15 \text{ minute}}$ descriptor refers to an L_{Aeq} noise level measured over a 15--minute period.
L_{Amin}	The minimum 'A-weighted' noise level received during a measuring interval.
L_{Amax}	The maximum root mean squared 'A-weighted' sound pressure level (or maximum noise level) received during a measuring interval.
L_{Ceq}	The equivalent continuous 'C-weighted' sound pressure level over a given period. The $L_{Ceq,15 \text{ minute}}$ descriptor refers to an L_{Ceq} noise level measured over a 15-minute period. C-weighting can be used to measure low frequency noise.
Day period	Monday – Saturday: 7 am to 6 pm, on Sundays and Public Holidays: 8 am to 6 pm.
Evening period	Monday – Saturday: 6 pm to 10 pm, on Sundays and Public Holidays: 6 pm to 10 pm.
Night period	Monday – Saturday: 10 pm to 7 am, on Sundays and Public Holidays: 10 pm to 8 am.
Temperature inversion	A meteorological condition where the atmospheric temperature increases with altitude.
Vibration Dose Value (VDV)	Vibration Dose is a parameter that combines the magnitude of vibration and the time for which it occurs. VDV is a cumulative measurement of the vibration level received over a 15-hour or 9-hour period (Day and night).

It is useful to have an appreciation of the decibel (dB), the unit of noise measurement. Table G.2 gives an indication as to what an average person perceives about changes in noise levels in the environment. Examples of common noise levels are provided in Figure G.1.

Table G.2 **Perceived change in noise**

Change in sound pressure level (dB)	Perceived change in noise in surrounding environment
up to 2	not perceptible
3	just perceptible
5	noticeable difference
10	twice (or half) as loud
15	large change
20	four times (or quarter) as loud

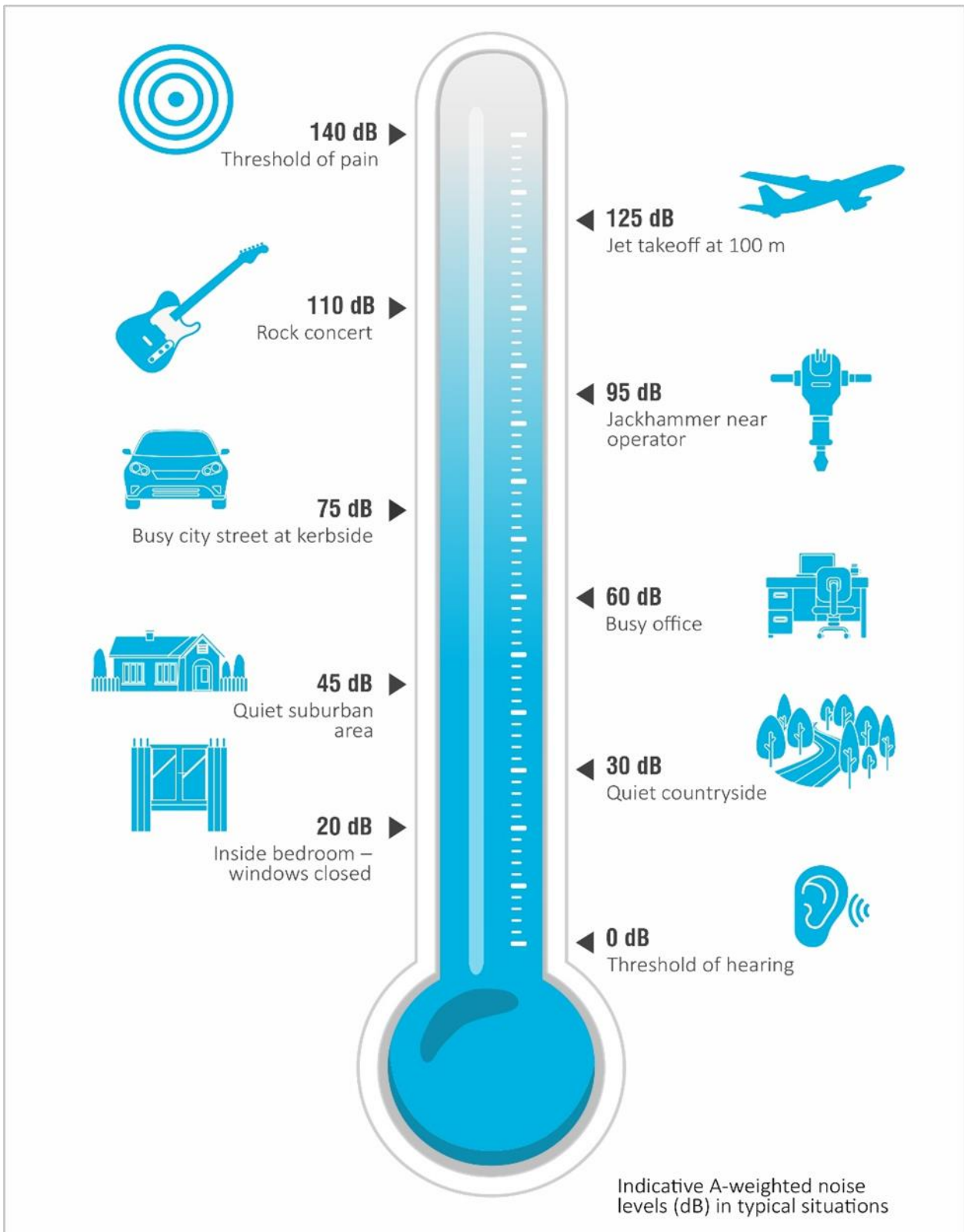


Figure G.1 Common noise levels

Appendix A

EPL 12700

Environment Protection Licence

Licence - 12700

Licence Details

Number:	12700
Anniversary Date:	02-August

Licensee

KLF HOLDINGS PTY LTD
 16 GRAND AVENUE
 CAMELLIA NSW 2142

Premises

KLF HOLDINGS PTY LTD
 16 GRAND AVENUE
 CAMELLIA NSW 2142

Scheduled Activity

Waste processing (non-thermal treatment)
 Waste storage

Fee Based Activity

Scale

Non-thermal treatment of general waste	Any annual processing capacity
Waste storage - other types of waste	Any other types of waste stored

Contact Us

NSW EPA
 4 Parramatta Square
 12 Darcy Street
 PARRAMATTA NSW 2150
 Phone: 131 555
 Email: info@epa.nsw.gov.au

Locked Bag 5022
 PARRAMATTA NSW 2124



Environment Protection Licence

Licence - 12700

INFORMATION ABOUT THIS LICENCE	4
Dictionary	4
Responsibilities of licensee	4
Variation of licence conditions	4
Duration of licence	4
Licence review	4
Fees and annual return to be sent to the EPA	4
Transfer of licence	5
Public register and access to monitoring data	5
1 ADMINISTRATIVE CONDITIONS	6
A1 What the licence authorises and regulates	6
A2 Premises or plant to which this licence applies	6
A3 Information supplied to the EPA	6
2 LIMIT CONDITIONS	6
L1 Pollution of waters	6
L2 Waste	7
L3 Noise limits	8
L4 Hours of operation	10
L5 Potentially offensive odour	11
3 OPERATING CONDITIONS	11
O1 Activities must be carried out in a competent manner	11
O2 Maintenance of plant and equipment	12
O3 Dust	12
O4 Emergency response	12
O5 Processes and management	12
O6 Waste management	13
O7 Other operating conditions	13
4 MONITORING AND RECORDING CONDITIONS	13
M1 Monitoring records	13
M2 Environmental monitoring	13
M3 Recording of pollution complaints	14
M4 Telephone complaints line	14
M5 Other monitoring and recording conditions	14
M6 Noise monitoring	15
5 REPORTING CONDITIONS	15



Environment Protection Licence

Licence - 12700

R1	Annual return documents -----	15
R2	Notification of environmental harm -----	16
R3	Written report -----	16
R4	Other reporting conditions -----	17
6	GENERAL CONDITIONS -----	17
G1	Copy of licence kept at the premises or plant -----	17
G2	Other general conditions -----	17
7	POLLUTION STUDIES AND REDUCTION PROGRAMS -----	18
U1	WATER MANAGMENT STUDIES -----	18
8	SPECIAL CONDITIONS -----	19
E1	Financial assurance -----	19
E2	Environmental Obligations of Licensee -----	20
E3	EPA may claim on Financial Assurance -----	21
	DICTIONARY -----	22
	General Dictionary -----	22

Environment Protection Licence

Licence - 12700

Information about this licence

Dictionary

A definition of terms used in the licence can be found in the dictionary at the end of this licence.

Responsibilities of licensee

Separate to the requirements of this licence, general obligations of licensees are set out in the Protection of the Environment Operations Act 1997 ("the Act") and the Regulations made under the Act. These include obligations to:

- ensure persons associated with you comply with this licence, as set out in section 64 of the Act;
- control the pollution of waters and the pollution of air (see for example sections 120 - 132 of the Act);
- report incidents causing or threatening material environmental harm to the environment, as set out in Part 5.7 of the Act.

Variation of licence conditions

The licence holder can apply to vary the conditions of this licence. An application form for this purpose is available from the EPA.

The EPA may also vary the conditions of the licence at any time by written notice without an application being made.

Where a licence has been granted in relation to development which was assessed under the Environmental Planning and Assessment Act 1979 in accordance with the procedures applying to integrated development, the EPA may not impose conditions which are inconsistent with the development consent conditions until the licence is first reviewed under Part 3.6 of the Act.

Duration of licence

This licence will remain in force until the licence is surrendered by the licence holder or until it is suspended or revoked by the EPA or the Minister. A licence may only be surrendered with the written approval of the EPA.

Licence review

The Act requires that the EPA review your licence at least every 5 years after the issue of the licence, as set out in Part 3.6 and Schedule 5 of the Act. You will receive advance notice of the licence review.

Fees and annual return to be sent to the EPA

For each licence fee period you must pay:

- an administrative fee; and
- a load-based fee (if applicable).



Environment Protection Licence

Licence - 12700

The EPA publication “A Guide to Licensing” contains information about how to calculate your licence fees. The licence requires that an Annual Return, comprising a Statement of Compliance and a summary of any monitoring required by the licence (including the recording of complaints), be submitted to the EPA. The Annual Return must be submitted within 60 days after the end of each reporting period. See condition R1 regarding the Annual Return reporting requirements.

Usually the licence fee period is the same as the reporting period.

Transfer of licence

The licence holder can apply to transfer the licence to another person. An application form for this purpose is available from the EPA.

Public register and access to monitoring data

Part 9.5 of the Act requires the EPA to keep a public register of details and decisions of the EPA in relation to, for example:

- licence applications;
- licence conditions and variations;
- statements of compliance;
- load based licensing information; and
- load reduction agreements.

Under s320 of the Act application can be made to the EPA for access to monitoring data which has been submitted to the EPA by licensees.

This licence is issued to:

KLF HOLDINGS PTY LTD
16 GRAND AVENUE
CAMELLIA NSW 2142

subject to the conditions which follow.

Environment Protection Licence

Licence - 12700

1 Administrative Conditions

A1 What the licence authorises and regulates

A1.1 This licence authorises the carrying out of the scheduled activities listed below at the premises specified in A2. The activities are listed according to their scheduled activity classification, fee-based activity classification and the scale of the operation.

Unless otherwise further restricted by a condition of this licence, the scale at which the activity is carried out must not exceed the maximum scale specified in this condition.

Scheduled Activity	Fee Based Activity	Scale
Waste processing (non-thermal treatment)	Non-thermal treatment of general waste	Any annual processing capacity
Waste storage	Waste storage - other types of waste	Any other types of waste stored

A2 Premises or plant to which this licence applies

A2.1 The licence applies to the following premises:

Premises Details
KLF HOLDINGS PTY LTD
16 GRAND AVENUE
CAMELLIA
NSW 2142
LOT A DP 109063

A3 Information supplied to the EPA

A3.1 Works and activities must be carried out in accordance with the proposal contained in the licence application, except as expressly provided by a condition of this licence.

In this condition the reference to "the licence application" includes a reference to:

- the applications for any licences (including former pollution control approvals) which this licence replaces under the Protection of the Environment Operations (Savings and Transitional) Regulation 1998; and
- the licence information form provided by the licensee to the EPA to assist the EPA in connection with the issuing of this licence.

2 Limit Conditions

L1 Pollution of waters

Environment Protection Licence

Licence - 12700

- L1.1 Except as may be expressly provided in any other condition of this licence, the licensee must comply with section 120 of the Protection of the Environment Operations Act 1997.

L2 Waste

- L2.1 The licensee must not cause, permit or allow any waste to be received at the premises, except the wastes expressly referred to in the column titled "Waste" and meeting the definition, if any, in the column titled "Description" in the table below.

Any waste received at the premises must only be used for the activities referred to in relation to that waste in the column titled "Activity" in the table below.

Any waste received at the premises is subject to those limits or conditions, if any, referred to in relation to that waste contained in the column titled "Other Limits" in the table below.

This condition does not limit any other conditions in this licence.

Code	Waste	Description	Activity	Other Limits
NA	Building and demolition waste	As defined in Schedule 1 of the POEO Act, in force from time to time.	Waste storage Waste processing (non-thermal treatment)	
NA	Virgin excavated natural material	As defined in Schedule 1 of the POEO Act, in force from time to time.	Waste storage Waste processing (non-thermal treatment)	
NA	Asphalt waste (including asphalt resulting from road construction and waterproofing works)	As defined in Schedule 1 of the POEO Act, in force from time to time.	Waste storage Waste processing (non-thermal treatment)	
NA	Wood waste	As defined in Schedule 1 of the POEO Act, in force from time to time.	Waste storage Waste processing (non-thermal treatment)	
NA	Waste tyres	As defined in Schedule 1 of the POEO Act, in force from time to time.	Waste storage	No more than 80 tyres or 400 kilograms of tyres, shredded tyres or tyre pieces may be stored at the premises at any time
NA	Garden waste	As defined in Schedule 1 of the POEO Act, in force from time to time	Waste storage	The amount of Garden Waste stored at the Premises must not exceed 5 Tonnes per annum
NA	Soils	Soil that meet the CT1 thresholds of General Solid Waste in Table 1 of the Waste Classification Guidelines as in force from time to time with	Waste storage Waste processing (non-thermal treatment)	Arsenic 40mg/kg; Cadmium 2mg/kg; Copper 200mg/kg; Mercury 1.5mg/kg; Zinc 600mg/kg;



Environment Protection Licence

Licence - 12700

	<p>the exception of the maximum threshold values for contaminants specified in the 'Other Limits' column</p>	<p>Petroleum Hydrocarbons C6-C9 150mg/kg; Petroleum Hydrocarbons C10-C36 1600mg/kg; Polycyclic aromatic hydrocarbons 80mg/kg; Polychlorinated biphenyls (individual) 1mg/kg. No Acid Sulfate Soil or Potential Acid Sulfate Soil is to be received at the Premises. Soil thresholds will be subject to review from time to time.</p>
--	--	--

- L2.2 The height of any stockpile of waste or any processed substance must not exceed four (4) metres.
- L2.3 The licensee must install and maintain a visible permanent stockpile marker that shows the permitted height of stockpiles, being four metres.
- L2.4 The authorised amount of waste permitted on the premises cannot exceed 6,500 tonnes at any one time.
- L2.5 Any waste that is not listed in table L2.1, including asbestos waste, that is found after receipt at the premises must be:
 - (a) stored in an isolated and appropriately sign-posted area;
 - (b) removed from the premises within one business day of receipt of the non-conforming waste to a place that can lawfully accept that type of waste; and
 - (c) details (date, amount, type of waste, disposal location, disposal dated) must be logged in a register that is kept at the premises.

L3 Noise limits

L3.1 Noise generated at the premises must not exceed the noise limits (in dB(A)) at the times and locations in table below.

Location	Day	Evening	Night	Night
-	LAeq(15 minute)	LAeq(15 minute)	LAeq(15 minute)	LAFmax
523-530 John Street Rydalmere	50	48	43	59

Environment Protection Licence

Licence - 12700

28 & 30 Sylvia Street Rydalmere, 33 Nowill Street Rydalmere	50	48	43	59
37-45 John Street Rydalmere	50	48	43	59
22 & 24 Milton Street Rydalmere, 33 & 35 John Street Rydalmere	50	48	43	59

L3.2 Noise-enhancing meteorological conditions

- The noise limits set out in condition L3.1 apply under the meteorological conditions listed in table below.
- For those meteorological conditions not referred to in condition L3.2(a) table, the noise limits that apply are the noise limits in condition L3.1 table plus 5dB.

Assessment Period	Meteorological Conditions
Day	Stability Categories A, B, C and D with wind speeds up to and including 3m/s at 10m above ground level
Evening	Stability Categories A, B, C and D with wind speeds up to and including 3m/s at 10m above ground level
Night	Stability Categories A, B, C and D with wind speeds up to and including 3m/s at 10m above ground level; or Stability category E and F with wind speeds up to and including 2m/s at 10m above ground level.

L3.3 For the purpose of condition L3.1;

- Day means the period from 7am to 6pm Monday to Saturday and the period from 8am to 6pm Sunday and public holidays.
- Evening means the period from 6pm to 10pm.
- Night means the period from 10pm to 7am Monday to Saturday and the period from 10pm to 8am Sunday and public holidays.

L3.4 For the purposes of condition L3.2:

- The meteorological conditions are to be determined from meteorological data obtained from the meteorological weather station identified as Bureau of Meteorology AWS at Sydney Olympic Park, NSW (Station no 066212).
- Stability category shall be determined using the following method from Fact Sheet D of the *Noise Policy for Industry* (NSW EPA, 2017):
 - Use of sigma-theta data (section D1.4).

L3.5 Noise measurements must not be undertaken where rain or wind speed at microphone level will affect the acquisition of valid measurements.

L3.6 To assess compliance:

Environment Protection Licence

Licence - 12700

a) with the LAeq(15mins) and LAmax noise limits in condition L3.1 and L3.2, the noise measurement equipment must be located:

(i) approximately on the property boundary, where any residence is situated 30 metres or less from the property boundary closest to the premises; or where applicable,

(ii) in an area within 30 metres of a residence façade, but not closer than 3 metres where any residence on the property is situated more than 30 meters from the property boundary closest to the premises; or, where applicable,

(iii) in an area within 50 metres of the boundary of a National park or a Nature Reserve,

(iv) at any other location identified in condition L3.1.

b) with the LAeq(15 minutes) or the LAmax noise limits in condition L3.1 and L3.3, the noise measurement equipment must be located:

(i) at the reasonably most affected point at a location where there is no residence at the location; or,

(ii) at the reasonably most affected point within an area at a location prescribed by condition L3.5(a).

L3.7 A non-compliance of conditions L3.1 and L3.2 will still occur where noise generated from the premises is measured in excess of the noise limit at a point other than the reasonably most affected point at the receiver locations referred to in conditions L3.6(a) or L3.6(b).

NOTE to Conditions L3.6 and L3.7. The reasonably most affected point is a point at a receiver location or within an area at a receiver location experiencing or expected to experience the highest sound pressure level from the premises.

L3.8 For the purposes of determining the noise generated from the premises, the modifying factor corrections in Table C1 in Fact Sheet C of the *Noise Policy for Industry* (NSW EPA, 2017) may be applied, if appropriate, to the noise measurements by the noise monitoring equipment.

Note: **Definition of Terms for noise limits**

- Noise Policy for Industry - the document entitled "*Noise Policy for Industry*" published by the NSW Environment Protection Authority in October 2017.

- Noise – 'sound pressure levels' for the purposes of conditions L3.1 to L3.8.

- LAeq (15 minute) - the value of the A-weighted sound pressure level of a continuous steady sound that, over a 15 minute time interval, has the same mean square sound pressure level as a sound under consideration with a level that varies with time (Australian Standard AS 1055:2018 *Acoustics: description and measurement of environmental noise*).

- LAFmax – the maximum sound pressure level of an event measured with a sound level meter satisfying Australian Standard AS IEC 61672.1-2013 *Electroacoustics - Sound level meters - Part 1: Specifications* set to 'A' frequency weighting and fast time weighting.

L4 Hours of operation

L4.1 The hours of operation of the use of the premises is permitted 24 hours per day, Monday to Sunday, except those activities restricted by conditions L4.2 to L4.8.

L4.2 **Truck Movement**

Between 10pm to 7am: A maximum of 8 truck movements per hour are permitted to deposit waste material on the premises.



Environment Protection Licence

Licence - 12700

L4.3 Loading or unloading of trucks

Between 10pm to 7am: The unloading or loading of trucks is limited to two trucks per 15 minutes.

L4.4 Heavy machinery operation

Between 10pm to 7am: No more than three excavators, or two excavators and one loader are permitted to operate concurrently.

L4.5 Limited activities

Between 10pm to 7am: Operations are to be limited to one activity, either receiving/unloading and sorting of waste, or loading trucks. With the exception of unloading & sorting of waste and loading of trucks with soil or similar light residual material which can occur concurrently.

L4.6 Recycling plant, loading of bricks restrictions

Between 10pm to 7am: Operation of the recycling plant is prohibited. Loading of bricks is prohibited.

L4.7 Placing down of skip bins

Between 6pm to 7am: The placing down of skip bins is prohibited.

L4.8 Operating excavator height limit

Between 10pm to 7am: The maximum height above ground level of any operating excavator engine shall not exceed 3.5 metres.

L5 **Potentially offensive odour**

L5.1 Any offensive odour generating material is to be removed from the premises within 24 hours of being received.

L5.2 No condition of this licence identifies a potentially offensive odour for the purposes of section 129 of the Protection of the Environment Operations Act 1997.

Note: Section 129 of the Protection of the Environment Operations Act 1997 provides that the licensee must not cause or permit the emission of any offensive odour from the Premises but provides a defence if the emission is identified in the relevant environment protection licence as a potentially offensive odour and the odour was emitted in accordance with the conditions of a licence directed at minimising odour.

3 **Operating Conditions**

O1 **Activities must be carried out in a competent manner**

O1.1 Licensed activities must be carried out in a competent manner.

This includes:

- a) the processing, handling, movement and storage of materials and substances used to carry out the activity; and
- b) the treatment, storage, processing, reprocessing, transport and disposal of waste generated by the activity.

Environment Protection Licence

Licence - 12700

O2 Maintenance of plant and equipment

- O2.1 All plant and equipment installed at the premises or used in connection with the licensed activity:
- must be maintained in a proper and efficient condition; and
 - must be operated in a proper and efficient manner.

O3 Dust

- O3.1 All activities conducted on the premises must be undertaken by such practical means to avoid or minimise the generation and emission of air pollutants, including dust.
- O3.2 The premises must be maintained in a condition which prevents or minimises the emission of air pollutants, including dust, from the premises.
- O3.3 The licensee must ensure that no material, including sediment or oil, is tracked from the premises.
- O3.4 Trucks entering and leaving the premises that are carrying loads must be covered at all times, except during loading and unloading.
- O3.5 All vehicular traffic associated with the operation of the facility must pass through the wheel wash when leaving the premises.
- O3.6 All entry/exits to the premises including the driveway must be cleaned, including swept each day. A daily record must be kept showing the time and date when cleaning has occurred and be provided to the EPA when requested.

O4 Emergency response

- O4.1 The licensee must prepare, maintain and implement as necessary, a current Pollution Incident Response Management Plan (PIRMP) for the premises.

Note: The licensee must develop their PIRMP in accordance with the requirements in Part 5.7A of the Protection of the Environment Operations Act 1997 (the POEO Act) and the POEO Regulations.

O5 Processes and management

- O5.1 All water systems including the water collection pit must not be covered by waste or obstructed by any material, including waste.

Note: The water collection pit is permitted to be temporarily covered by a metal plate to allow vehicles to travel across.

- O5.2 All stockpiles of waste and any other material must be at least 1.5 metres away from the water collection pit at all times.

Environment Protection Licence

Licence - 12700

- O5.3 All water systems (including all pits, pipes, absorption, detention structures, treatment devices and rainwater tanks) must be regularly maintained to prevent the build-up of sediment.

O6 Waste management

- O6.1 All Garden Waste received at the premises must be stored in a sealed bin.
- O6.2 The Licensee must ensure that all waste stored or processed at the premises is assessed and classified in accordance with the EPA Waste Classification Guidelines as in force from time to time.

O7 Other operating conditions

- O7.1 At all times, the noise attenuation wall surrounding the perimeter of the premises must be maintained in a proper and efficient manner, with no gaps or missing sections.

4 Monitoring and Recording Conditions

M1 Monitoring records

- M1.1 The results of any monitoring required to be conducted by this licence or a load calculation protocol must be recorded and retained as set out in this condition.
- M1.2 All records required to be kept by this licence must be:
- in a legible form, or in a form that can readily be reduced to a legible form;
 - kept for at least 4 years after the monitoring or event to which they relate took place; and
 - produced in a legible form to any authorised officer of the EPA who asks to see them.
- M1.3 The following records must be kept in respect of any samples required to be collected for the purposes of this licence:
- the date(s) on which the sample was taken;
 - the time(s) at which the sample was collected;
 - the point at which the sample was taken; and
 - the name of the person who collected the sample.

M2 Environmental monitoring

- M2.1 Attended noise monitoring must be undertaken in accordance with Condition L3.6 and must:
- occur quarterly in a reporting period;
 - occur during each day, evening and night period as defined in the Noise Policy for Industry for a minimum of
 - 1.5 hours during the day;
 - 30 minutes during the evening; and
 - 1 hour during the night



Environment Protection Licence

Licence - 12700

c) occur for two consecutive operating days.

M3 Recording of pollution complaints

M3.1 The licensee must keep a legible record of all complaints made to the licensee or any employee or agent of the licensee in relation to pollution arising from any activity to which this licence applies.

M3.2 The record must include details of the following:

- a) the date and time of the complaint;
- b) the method by which the complaint was made;
- c) any personal details of the complainant which were provided by the complainant or, if no such details were provided, a note to that effect;
- d) the nature of the complaint;
- e) the action taken by the licensee in relation to the complaint, including any follow-up contact with the complainant; and
- f) if no action was taken by the licensee, the reasons why no action was taken.

M3.3 The record of a complaint must be kept for at least 4 years after the complaint was made.

M3.4 The record must be produced to any authorised officer of the EPA who asks to see them.

M4 Telephone complaints line

M4.1 The licensee must operate during its operating hours a telephone complaints line for the purpose of receiving any complaints from members of the public in relation to activities conducted at the premises or by the vehicle or mobile plant, unless otherwise specified in the licence.

M4.2 The licensee must notify the public of the complaints line telephone number and the fact that it is a complaints line so that the impacted community knows how to make a complaint.

M4.3 The preceding two conditions do not apply until 3 months after: the date of the issue of this licence.

M5 Other monitoring and recording conditions

M5.1 The licensee must keep a record of each load of Soil, as referred to under Condition L2.1, that is received at the premises. The record must include, but not necessarily be limited to, the following:

- a) a copy of the waste classification report in accordance with the Waste Classification Guidelines, including the classification and the limits specified in the L2.1 table;
- b) the quantity (in tonnes) of the Soil received;
- c) the date and time that the Soil were received;
- d) the registration number of the vehicle transporting the Soil to the premises;
- e) the name and contact details of the company or individual delivering the Soil to the premises;
- f) the source(s) and address from where the Soil were received;

The record must be retained at the premises for at least 4 years after the receipt of the load of the soil.
The record must be produced to any authorised officer of the EPA upon request.

Environment Protection Licence

Licence - 12700

M6 Noise monitoring

M6.1 Attended noise monitoring must be undertaken in accordance with Condition L3.6 and must:

- a) occur quarterly in a reporting period;
- b) occur during each day, evening and night period as defined in the Noise Policy for Industry for a minimum of:
 - i. 1.5 hours during the day;
 - ii. 30 minutes during the night; and
 - iii. 1 hour during the night.
- c) occur for two consecutive operating days.

5 Reporting Conditions

R1 Annual return documents

R1.1 The licensee must complete and supply to the EPA an Annual Return in the approved form comprising:

1. a Statement of Compliance,
2. a Monitoring and Complaints Summary,
3. a Statement of Compliance - Licence Conditions,
4. a Statement of Compliance - Load based Fee,
5. a Statement of Compliance - Requirement to Prepare Pollution Incident Response Management Plan,
6. a Statement of Compliance - Requirement to Publish Pollution Monitoring Data; and
7. a Statement of Compliance - Environmental Management Systems and Practices.

At the end of each reporting period, the EPA will provide to the licensee notification that the Annual Return is due.

R1.2 An Annual Return must be prepared in respect of each reporting period, except as provided below.

R1.3 Where this licence is transferred from the licensee to a new licensee:

- a) the transferring licensee must prepare an Annual Return for the period commencing on the first day of the reporting period and ending on the date the application for the transfer of the licence to the new licensee is granted; and
- b) the new licensee must prepare an Annual Return for the period commencing on the date the application for the transfer of the licence is granted and ending on the last day of the reporting period.

R1.4 Where this licence is surrendered by the licensee or revoked by the EPA or Minister, the licensee must prepare an Annual Return in respect of the period commencing on the first day of the reporting period and ending on:

- a) in relation to the surrender of a licence - the date when notice in writing of approval of the surrender is given; or
- b) in relation to the revocation of the licence - the date from which notice revoking the licence operates.

R1.5 The Annual Return for the reporting period must be supplied to the EPA via eConnect *EPA* or by registered post not later than 60 days after the end of each reporting period or in the case of a



Environment Protection Licence

Licence - 12700

transferring licence not later than 60 days after the date the transfer was granted (the 'due date').

R1.6 The licensee must retain a copy of the Annual Return supplied to the EPA for a period of at least 4 years after the Annual Return was due to be supplied to the EPA.

R1.7 Within the Annual Return, the Statements of Compliance must be certified and the Monitoring and Complaints Summary must be signed by:

- a) the licence holder; or
- b) by a person approved in writing by the EPA to sign on behalf of the licence holder.

Note: The term "reporting period" is defined in the dictionary at the end of this licence. Do not complete the Annual Return until after the end of the reporting period.

Note: An application to transfer a licence must be made in the approved form for this purpose.

R2 Notification of environmental harm

R2.1 Notifications must be made by telephoning the Environment Line service on 131 555.

R2.2 The licensee must provide written details of the notification to the EPA within 7 days of the date on which the incident occurred.

Note: The licensee or its employees must notify all relevant authorities of incidents causing or threatening material harm to the environment immediately after the person becomes aware of the incident in accordance with the requirements of Part 5.7 of the Act.

R3 Written report

R3.1 Where an authorised officer of the EPA suspects on reasonable grounds that:

- a) where this licence applies to premises, an event has occurred at the premises; or
 - b) where this licence applies to vehicles or mobile plant, an event has occurred in connection with the carrying out of the activities authorised by this licence,
- and the event has caused, is causing or is likely to cause material harm to the environment (whether the harm occurs on or off premises to which the licence applies), the authorised officer may request a written report of the event.

R3.2 The licensee must make all reasonable inquiries in relation to the event and supply the report to the EPA within such time as may be specified in the request.

R3.3 The request may require a report which includes any or all of the following information:

- a) the cause, time and duration of the event;
- b) the type, volume and concentration of every pollutant discharged as a result of the event;
- c) the name, address and business hours telephone number of employees or agents of the licensee, or a specified class of them, who witnessed the event;
- d) the name, address and business hours telephone number of every other person (of whom the licensee is aware) who witnessed the event, unless the licensee has been unable to obtain that information after making reasonable effort;
- e) action taken by the licensee in relation to the event, including any follow-up contact with any complainants;

Environment Protection Licence

Licence - 12700

- f) details of any measure taken or proposed to be taken to prevent or mitigate against a recurrence of such an event; and
- g) any other relevant matters.

R3.4 The EPA may make a written request for further details in relation to any of the above matters if it is not satisfied with the report provided by the licensee. The licensee must provide such further details to the EPA within the time specified in the request.

R4 Other reporting conditions

- R4.1 A noise compliance assessment report must be submitted to the EPA within 30 days of the completion of the quarterly monitoring required in M6.1. The assessment must be prepared by a competent person and include:
- a. an assessment of compliance with noise limits presented in Condition L3.1 and L3.2; and
 - b. an outline of any management actions taken within the monitoring period to address any exceedances of the limits contained in Condition L3.1 and L3.2.

6 General Conditions

G1 Copy of licence kept at the premises or plant

- G1.1 A copy of this licence must be kept at the premises to which the licence applies.
- G1.2 The licence must be produced to any authorised officer of the EPA who asks to see it.
- G1.3 The licence must be available for inspection by any employee or agent of the licensee working at the premises.

G2 Other general conditions

G2.1 Completed Programs

Program	Description	Completed Date
Provide report to calculate the capacity required	provide report to calculate the capacity required to ensure that all rainfall on the premises during a one-in-ten year rainfall event. . Improved environmental management of the site.(*)	17-September-2007
Install a permanent stockpile marker that shows th	install a permanent stockpile marker that shows the permitted height of stockpiles, being four metres.	17-December-2015
Install and/or upgrade the plant used to remove du	install and/or upgrade the plant used to remove dust and dirt from vehicles.	30-September-2007
Install and upgrade plant used to remove dust an	Install and upgrade plant used to remove dust and dirt from truck.. Improved environmental performance of the site.(*)	30-September-2007

Environment Protection Licence

Licence - 12700

Install sprinkler system on processing machinery	fixed sprinkler system to be installed on tromelling machine to minimise dust emissions during processing	25-July-2012
Upgrade dust suppression sprinkler system	fixed sprinkler system to be updated to automatically wet down all areas of internal roadways	25-July-2012
Dust Management Plan	Preparation of a dust management plan, including assessment of impacts and proposed mitigation measures. Following agreement, implementation of the proposed mitigation measures.	03-September-2020

7 Pollution Studies and Reduction Programs

U1 WATER MANAGMENT STUDIES

WATER CHARACTERISATION

U1.1 The Licensee must engage a suitably qualified professional, with water sampling and characterisation experience, who is a member of the *Australian Contaminated Land Consultants Association* or is certified under the *Certified Environmental Practitioner Scheme* of the Environment Institute of Australia and New Zealand Inc, to characterise the quality of water collected on and discharged from the Premises.

U1.2 A water sampling plan for the characterisation must be submitted to the EPA by no later than 5PM 5 March 2021.

U1.3 The water sampling plan must propose:

1. sampling location(s), including all water storages and discharge points;
2. the pollutants to be sampled, including all those potentially present at levels that pose a risk of non-trivial harm to human health or the environment ('pollutants of concern') (this must be informed by a risk assessment of the types of materials stored and processed on the Premises);
3. the number of sampling events / sampling frequency (a sufficient number of events must be sampled to capture the full range of operational conditions and water quality, including average or typical through to worst case scenarios).

Note: Sampling and analysis must be consistent with the *Approved Methods for the Sampling and Analysis of Water Pollutants in NSW* (2004).

U1.4 The water sampling plan must be agreed to in writing by the EPA prior to commencement of sampling.

U1.5 The water characterisation must:

1. compare results to the relevant ANZECC (2000) Guidelines for Fresh and Marine Water Quality trigger values; and
2. specify the analytical limits of reporting used for any data that is being assessed:

Environment Protection Licence

Licence - 12700

- a. compare that limit of reporting to the relevant ANZECC (2000) assessment criteria; and
- b. where the limit of reporting does not provide a suitable basis for assessing risk of water pollution, propose alternative options to characterise the risk, including more sensitive laboratory testing or risk mitigation options (The level of reporting should be sensitive enough to detect pollutants at levels related to their environmental risk and ANZECC (2000) toxicant trigger value (where available) while having regard to the best available analytical practical quantification limits using available technology.

Note: The licensee may consider alkalinity, hardness and pH as factors that could potentially modify the toxicity and bioavailability of any relevant metals.

U1.6 The water characterisation, must be submitted to the EPA within **one month of the final sampling event**.

SURFACE WATER OPTIONS ASSESSMENT

- U1.7 The licensee must complete a *Surface Water Options Assessment* to identify measures to address risks to waterways posed by stormwater and leachate from the Premises. The assessment must:
1. be prepared by a suitably qualified and experienced person/s
 2. consider a range of options to improve management of surface water at the premises, including minimising pooling, contamination and discharges of stormwater – options considered should include but not be limited to:
 - a. increasing water storage capacity and reuse to reduce the frequency and volume of overflows;
 - b. storing and processing waste in a bunded, undercover area/s and collecting leachate for offsite disposal or discharge to sewer (subject to a trade waste agreement);
 - c. managing 'clean' roof runoff, 'dirty' stormwater and 'contaminated' leachate separately.
 3. propose measures to be implemented, from the options considered, providing justification including a water balance demonstrating effectiveness.
- U1.8 The Licensee must provide a written Surface Water Options Assessment report to the EPA by no later than **3 months** after the date of submission of the water characterisation.

8 Special Conditions

E1 Financial assurance

- E1.1 A financial assurance in the form of an unconditional and irrevocable guarantee from a bank, building society or credit union in favour of the EPA in the amount of sixty five thousand dollars (\$65 000) must be provided to the EPA by 30 September 2007. The financial assurance is required to secure or guarantee funding for works or programs required by or under this licence. The financial assurance must contain a term that provides that any monies claimed can be paid to the EPA or, at the written direction of the EPA, to any other person.
- E1.2 A financial assurance in the form of an unconditional and irrevocable guarantee from a bank, building society or credit union in favour of the EPA in the amount of sixty five thousand dollars (\$130 000) must be provided to the EPA by 31 July 2008. The financial assurance is required to secure or guarantee funding for works or programs required by or under this licence. The financial assurance must contain a term that provides that any monies claimed can be paid to the EPA or, at the written direction of the EPA,



Environment Protection Licence

Licence - 12700

to any other person.

- E1.3 A financial assurance in the form of an unconditional and irrevocable guarantee from a bank, building society or credit union in favour of the EPA in the amount of two hundred and twenty thousand dollars (\$220 000) must be provided to the EPA by 31 July 2009. The financial assurance is required to secure or guarantee funding for works or programs required by or under this licence. The financial assurance must contain a term that provides that any monies claimed can be paid to the EPA or, at the written direction of the EPA, to any other person. (received)
- E1.4 The financial assurance must be maintained during the operation of the facility and thereafter until such time as the EPA is satisfied the premises is environmentally secure.
- E1.5 The financial assurance must be replenished by the full amount claimed or realised if the EPA has claimed on or realised the financial assurance or any part of it to undertake a work or program required to be carried out by the licence which has not been undertaken by the licence holder.
- E1.6 The EPA may increase the amount of the financial assurance at any time as a result of reassessment of the total likely costs and expenses of rehabilitation of the premises.
- E1.7 The licensee must provide to the EPA the original counterpart guarantee within five working days of the issue of:
- a) the adjusted financial assurance as required by condition E1.6.

E2 Environmental Obligations of Licensee

- E2.1 While the licensee's premises are being used for the purpose to which the licence relates, the licensee must:
- a) Clean up any spill, leak or other discharge of any waste(s) or other material(s) as soon as practicable after it becomes known to the licensee or to one of the licensee's employees or agents.
- b) In the event(s) that any liquid and non-liquid waste(s) is unlawfully deposited on the premises, such waste(s) must be removed and lawfully disposed of as soon as practicable or in accordance with any direction given by the EPA.
- c) Provide all monitoring data as required by the conditions of this licence or as directed by the EPA.
- E2.2 In the event of an earthquake, storm, fire, flood or any other event where it is reasonable to suspect that a pollution incident has occurred, is occurring or is likely to occur, the licensee (whether or not the premises continue to be used for the purposes to which the licence relates) must:
- a) Make all efforts to contain all firewater on the licensee's premises;
- b) Make all efforts to control air pollution from the licensee's premises;
- c) Make all efforts to contain any discharge, spill or run-off from the licensee's premises;
- d) Make all efforts to prevent flood water entering the licensee's premises;
- e) Remediate and rehabilitate any exposed areas of soil and/or waste;
- f) Lawfully dispose of all liquid and solid waste(s) stored on the premises that is not already securely disposed of;
- g) At the request of the EPA monitor groundwater beneath the licensee's premises and its potential to migrate from the licensee's premises;



Environment Protection Licence

Licence - 12700

- h) At the request of the EPA monitor surface water leaving the licensee's premises and
- i) Ensure the licensee's premises is secure.

E2.3 After the licensee's premises cease to be used for the purpose to which the licence relates or in the event that the licensee ceases to carry out the activity that is the subject of this licence, that licensee must:

- a) remove and lawfully dispose of all liquid and non-liquid waste stored on the licensee's premises;
- b) rehabilitate the site, including conducting an assessment of and, if required, remediation of any site contamination.

E3 EPA may claim on Financial Assurance

E3.1 The EPA may claim on a financial assurance under s303 of the POEO Act if a licensee fails to carry out any work or program required to comply with the conditions of this licence or clean up notice issued under section 91 of the Protection of the Environment Operations Act 1997.

Environment Protection Licence

Licence - 12700

Dictionary

General Dictionary

3DGM [in relation to a concentration limit]	Means the three day geometric mean, which is calculated by multiplying the results of the analysis of three samples collected on consecutive days and then taking the cubed root of that amount. Where one or more of the samples is zero or below the detection limit for the analysis, then 1 or the detection limit respectively should be used in place of those samples
Act	Means the Protection of the Environment Operations Act 1997
activity	Means a scheduled or non-scheduled activity within the meaning of the Protection of the Environment Operations Act 1997
actual load	Has the same meaning as in the Protection of the Environment Operations (General) Regulation 2009
AM	Together with a number, means an ambient air monitoring method of that number prescribed by the <i>Approved Methods for the Sampling and Analysis of Air Pollutants in New South Wales</i> .
AMG	Australian Map Grid
anniversary date	The anniversary date is the anniversary each year of the date of issue of the licence. In the case of a licence continued in force by the Protection of the Environment Operations Act 1997, the date of issue of the licence is the first anniversary of the date of issue or last renewal of the licence following the commencement of the Act.
annual return	Is defined in R1.1
Approved Methods Publication	Has the same meaning as in the Protection of the Environment Operations (General) Regulation 2009
assessable pollutants	Has the same meaning as in the Protection of the Environment Operations (General) Regulation 2009
BOD	Means biochemical oxygen demand
CEM	Together with a number, means a continuous emission monitoring method of that number prescribed by the <i>Approved Methods for the Sampling and Analysis of Air Pollutants in New South Wales</i> .
COD	Means chemical oxygen demand
composite sample	Unless otherwise specifically approved in writing by the EPA, a sample consisting of 24 individual samples collected at hourly intervals and each having an equivalent volume.
cond.	Means conductivity
environment	Has the same meaning as in the Protection of the Environment Operations Act 1997
environment protection legislation	Has the same meaning as in the Protection of the Environment Administration Act 1991
EPA	Means Environment Protection Authority of New South Wales.
fee-based activity classification	Means the numbered short descriptions in Schedule 1 of the Protection of the Environment Operations (General) Regulation 2009.
general solid waste (non-putrescible)	Has the same meaning as in Part 3 of Schedule 1 of the Protection of the Environment Operations Act 1997

Environment Protection Licence

Licence - 12700

flow weighted composite sample	Means a sample whose composites are sized in proportion to the flow at each composites time of collection.
general solid waste (putrescible)	Has the same meaning as in Part 3 of Schedule 1 of the Protection of the Environment Operations Act 1997
grab sample	Means a single sample taken at a point at a single time
hazardous waste	Has the same meaning as in Part 3 of Schedule 1 of the Protection of the Environment Operations Act 1997
licensee	Means the licence holder described at the front of this licence
load calculation protocol	Has the same meaning as in the Protection of the Environment Operations (General) Regulation 2009
local authority	Has the same meaning as in the Protection of the Environment Operations Act 1997
material harm	Has the same meaning as in section 147 Protection of the Environment Operations Act 1997
MBAS	Means methylene blue active substances
Minister	Means the Minister administering the Protection of the Environment Operations Act 1997
mobile plant	Has the same meaning as in Part 3 of Schedule 1 of the Protection of the Environment Operations Act 1997
motor vehicle	Has the same meaning as in the Protection of the Environment Operations Act 1997
O&G	Means oil and grease
percentile [in relation to a concentration limit of a sample]	Means that percentage [eg.50%] of the number of samples taken that must meet the concentration limit specified in the licence for that pollutant over a specified period of time. In this licence, the specified period of time is the Reporting Period unless otherwise stated in this licence.
plant	Includes all plant within the meaning of the Protection of the Environment Operations Act 1997 as well as motor vehicles.
pollution of waters [or water pollution]	Has the same meaning as in the Protection of the Environment Operations Act 1997
premises	Means the premises described in condition A2.1
public authority	Has the same meaning as in the Protection of the Environment Operations Act 1997
regional office	Means the relevant EPA office referred to in the Contacting the EPA document accompanying this licence
reporting period	For the purposes of this licence, the reporting period means the period of 12 months after the issue of the licence, and each subsequent period of 12 months. In the case of a licence continued in force by the Protection of the Environment Operations Act 1997, the date of issue of the licence is the first anniversary of the date of issue or last renewal of the licence following the commencement of the Act.
restricted solid waste	Has the same meaning as in Part 3 of Schedule 1 of the Protection of the Environment Operations Act 1997
scheduled activity	Means an activity listed in Schedule 1 of the Protection of the Environment Operations Act 1997
special waste	Has the same meaning as in Part 3 of Schedule 1 of the Protection of the Environment Operations Act 1997
TM	Together with a number, means a test method of that number prescribed by the <i>Approved Methods for the Sampling and Analysis of Air Pollutants in New South Wales</i> .

Environment Protection Licence

Licence - 12700

TSP	Means total suspended particles
TSS	Means total suspended solids
Type 1 substance	Means the elements antimony, arsenic, cadmium, lead or mercury or any compound containing one or more of those elements
Type 2 substance	Means the elements beryllium, chromium, cobalt, manganese, nickel, selenium, tin or vanadium or any compound containing one or more of those elements
utilisation area	Means any area shown as a utilisation area on a map submitted with the application for this licence
waste	Has the same meaning as in the Protection of the Environment Operations Act 1997
waste type	Means liquid, restricted solid waste, general solid waste (putrescible), general solid waste (non - putrescible), special waste or hazardous waste

Mr Chris McElwain

Environment Protection Authority

(By Delegation)

Date of this edition: 02-August-2007

Environment Protection Licence

Licence - 12700

End Notes

- 1 Licence varied by notice 1079460, issued on 06-Nov-2007, which came into effect on 06-Nov-2007.
- 2 Condition A1.3 Not applicable varied by notice issued on <issue date> which came into effect on <effective date>
- 3 Licence varied by notice 1101272, issued on 04-Jun-2009, which came into effect on 04-Jun-2009.
- 4 Licence varied by Correction to EPA Region data record., issued on 23-Jun-2010, which came into effect on 23-Jun-2010.
- 5 Licence varied by notice 1118346, issued on 15-Sep-2010, which came into effect on 15-Sep-2010.
- 6 Licence varied by notice 1120031, issued on 07-Oct-2010, which came into effect on 07-Oct-2010.
- 7 Licence varied by notice 1504863 issued on 26-Apr-2012
- 8 Licence varied by notice 1506267 issued on 05-Oct-2012
- 9 Licence varied by notice 1532402 issued on 23-Sep-2015
- 10 Licence varied by notice 1535958 issued on 17-Dec-2015
- 11 Licence varied by notice 1542563 issued on 24-Aug-2016
- 12 Licence varied by notice 1545299 issued on 27-Sep-2016
- 13 Licence varied by notice 1564953 issued on 30-Jul-2018
- 14 Licence varied by notice 1593778 issued on 03-Feb-2021
- 15 Licence varied by notice 1609232 issued on 23-Jun-2021
- 16 Licence varied by notice 1611049 issued on 29-Jul-2021

Appendix B

Calibration certificates

CERTIFICATE OF CALIBRATION

CERTIFICATE No: **SLM 30138**

EQUIPMENT TESTED: Sound Level Meter

Manufacturer: B & K

Type No: 2250

Mic. Type: B&K 4189

Pre-Amp. Type: ZC0032

Serial No: 3008201

Serial No: 2888134

Serial No: 16037

Filter Type: 1/3 Octave

Test No: FILT 6597

Owner: EMM Consulting

Ground Floor, Suite 01, 20 Chandos St
St Leonards NSW 2065

Tests IEC 61672-3:2013,

Performed: IEC 1260:1995, & AS/NZS 4476:1997

Comments: All Test passed for Class 1. (See overleaf for details)

CONDITIONS OF TEST:

Ambient Pressure 1001 hPa ± 1 hPa

Temperature 22 $^{\circ}\text{C} \pm 1^{\circ}\text{C}$



Relative Humidity 36 % $\pm 5\%$

Date of Receipt : 23/07/2021

Date of Calibration : 26/07/2021

Date of Issue : 26/07/2021

Acu-Vib Test Procedure: AVP10 (SLM) & AVP06 (Filters)

CHECKED BY:  **AUTHORISED SIGNATURE:** 

Hein Soe

Accredited for compliance with ISO/IEC 17025 - Calibration
Results of the tests, calibration and/or measurements included in this document are traceable to SI units through reference equipment that has been calibrated by the Australian National Measurement Institute or other NATA accredited laboratories demonstrating traceability.

This report applies only to the item identified in the report and may not be reproduced in part.

The uncertainties quoted are calculated in accordance with the methods of the ISO Guide to the Uncertainty of Measurement and quoted at a coverage factor of 2 with a confidence interval of approximately 95%.



**WORLD RECOGNISED
ACCREDITATION**

Accredited Lab No. 9262
Acoustic and Vibration
Measurements


Acu-Vib Electronics
CALIBRATIONS SALES RENTALS REPAIRS

Head Office & Calibration Laboratory
Unit 14, 22 Hudson Ave. Castle Hill NSW 2154
(02) 9680 8133
www.acu-vib.com.au

CERTIFICATE OF CALIBRATION

CERTIFICATE NO: C30881

EQUIPMENT TESTED : Sound Level Calibrator

Manufacturer: Svantek
Type No: SV-36 **Serial No:** 86311
Owner: EMM Consulting
Suite 01, 20 Chandos St
St Leonards NSW 2065

Tests Performed: Measured Output Pressure level, Frequency & Distortion
Comments: See Details overleaf. All Test Passed.

Parameter	Pre-Adj	Adj Y/N	Output: (dB re 20 µPa)	Frequency (Hz)	THD&N (%)
Level1:	NA	N	94.05 dB	999.99 Hz	1.00 %
Level2:	NA	N	114.05 dB	999.99 Hz	1.00 %
Uncertainty			±0.11 dB	±0.05%	±0.20 %

Uncertainty (at 95% c.l.) k=2

CONDITION OF TEST:

Ambient Pressure 1002 hPa ±1 hPa **Date of Receipt :** 20/10/2021
Temperature 23 °C ±1° C **Date of Calibration :** 20/10/2021
Relative Humidity 41 % ±5% **Date of Issue :** 20/10/2021

Acu-Vib Test AVP02 (Calibrators)
Procedure: Test Method: AS IEC 60942 - 2017

CHECKED BY:  **AUTHORISED SIGNATURE:** 
Jack Kiehl

Accredited for compliance with ISO/IEC 17025 - Calibration
Results of the tests, calibration and/or measurements included in this document are traceable to SI units through reference equipment that has been calibrated by the Australian National Measurement Institute or other NATA accredited laboratories demonstrating traceability.

This report applies only to the item identified in the report and may not be reproduced in part.
The uncertainties quoted are calculated in accordance with the methods of the ISO Guide to the Uncertainty of Measurement and quoted at a coverage factor of 2 with a confidence interval of approximately 95%.



WORLD RECOGNISED
ACCREDITATION

Accredited Lab No. 9262
Acoustic and Vibration
Measurements


Acu-Vib Electronics
CALIBRATIONS SALES RENTALS REPAIRS

Head Office & Calibration Laboratory
Unit 14, 22 Hudson Ave. Castle Hill NSW 2154
(02) 9680 8133
www.acu-vib.com.au

Australia

SYDNEY

Ground floor 20 Chandos Street
St Leonards NSW 2065
T 02 9493 9500

NEWCASTLE

Level 3 175 Scott Street
Newcastle NSW 2300
T 02 4907 4800

BRISBANE

Level 1 87 Wickham Terrace
Spring Hill QLD 4000
T 07 3648 1200

CANBERRA

Level 2 Suite 2.04
15 London Circuit
Canberra City ACT 2601

ADELAIDE

Level 4 74 Pirie Street
Adelaide SA 5000
T 08 8232 2253

MELBOURNE

Suite 8.03 Level 8 454 Collins
Street
Melbourne VIC 3000
T 03 9993 1900

PERTH

Suite 9.02 Level 9 109 St
Georges Terrace
Perth WA 6000

Canada

TORONTO

2345 Young Street Suite 300
Toronto ON M4P 2E5

VANCOUVER

60 W 6th Ave Suite 200
Vancouver BC V5Y 1K1



[linkedin.com/company/emm-consulting-pty-limited](https://www.linkedin.com/company/emm-consulting-pty-limited)



emmconsulting.com.au