

# **KLF Holdings Pty Ltd Recycling Facility**

## **Noise Compliance Report - Quarter 2 2022**

---

Prepared for KLF Holdings Pty Ltd

July 2022

# KLF Holdings Pty Ltd Recycling Facility

## Noise Compliance Report - Quarter 2 2022

KLF Holdings Pty Ltd

E220281 RP2022Q2

July 2022

Version	Date	Prepared by	Approved by	Comments
1	7 July 2022	Jared Blackburn	Carl Fokkema	Final

Approved by



**Carl Fokkema**

Associate - Acoustics

5 July 2022

Ground floor 20 Chandos Street

St Leonards NSW 2065

PO Box 21

St Leonards NSW 1590

This report has been prepared in accordance with the brief provided by KLF Holdings Pty Ltd and has relied upon the information collected at the time and under the conditions specified in the report. All findings, conclusions or recommendations contained in the report are based on the aforementioned circumstances. The report is for the use of KLF Holdings Pty Ltd and no responsibility will be taken for its use by other parties. KLF Holdings Pty Ltd may, at its discretion, use the report to inform regulators and the public.

© Reproduction of this report for educational or other non-commercial purposes is authorised without prior written permission from EMM provided the source is fully acknowledged. Reproduction of this report for resale or other commercial purposes is prohibited without EMM's prior written permission.

# TABLE OF CONTENTS

---

<b>1</b>	<b>Introduction</b>	<b>1</b>
<b>2</b>	<b>Noise limits and monitoring requirements</b>	<b>2</b>
2.1	Noise Limits	2
2.2	Meteorological conditions	2
<b>3</b>	<b>Assessment methodology</b>	<b>4</b>
3.1	Attended noise monitoring	4
3.2	Instrumentation	4
3.3	Weather conditions	6
3.4	Site operating hours	6
<b>4</b>	<b>Monitoring data and discussion</b>	<b>7</b>
<b>5</b>	<b>Conclusion</b>	<b>13</b>
	<b>Glossary</b>	<b>14</b>

## Appendices

Appendix A	EPL 12700	A.1
Appendix B	Calibration certificates	B.1

## Tables

Table 2.1	Noise limits	2
Table 2.2	Applicable meteorological conditions	2
Table 3.1	Attended noise monitoring locations	4
Table 3.2	Stability categories and vertical temperature gradients	6
Table 4.1	Attended noise monitoring results – Q2 2022, 14-15 June	8
Table G.1	Glossary of acoustic terms	14
Table G.2	Perceived change in noise	15

## Figures

Figure 3.1	Site locality and attended noise monitoring locations	5
Figure G.1	Common noise levels	16

# 1 Introduction

EMM Consulting Pty Limited (EMM) has been engaged to complete quarterly attended compliance noise monitoring for the Camelia Waste Recycling Facility (the site) on behalf of KLF Holdings Pty Limited (KLF). This quarterly monitoring is a requirement as detailed in the site's Environment Protection Licence (12700) dated 20 July 2021.

This report presents the results and findings of Quarter 2 2022 attended noise monitoring conducted during the day, evening and night periods of 14 and 15 June 2022.

The following documents were referenced as part of this assessment:

- KLF Holdings Pty Ltd Environment Protection Licence (EPL) 12700 (20 July 2021);
- AS 1055.2018 Acoustics - Description and measurement of environmental noise;
- Environment Protection Authority (EPA), Noise Policy for Industry (NPfI) (2017); and
- Environment Protection Authority (EPA), Road Noise Policy (RNP) (2011).

Technical terms used in this report are explained in the glossary.

## 2 Noise limits and monitoring requirements

Noise assessment criteria for the site are provided in the site's EPL. These are specified for day, evening and night periods at locations which are representative of residences potentially most impacted by site noise. Pages from the site's EPL pertaining to noise are shown in Appendix A.

### 2.1 Noise Limits

Condition L3.1 of the site's EPL nominates noise limits KLF Camelia, which are reproduced in Table 2.1.

**Table 2.1 Noise limits**

Location	Noise limits, dB $L_{Aeq,15min}$			Noise limits, dB $L_{AFmax}$
	Day	Evening	Night	Night
523-530 John Street Rydalmere	50	48	43	59
28 & 30 Sylvie Street Rydalmere, 33 Nowill Street Rydalmere	50	48	43	59
37-45 John Street Rydalmere	50	48	43	59
22 & 24 Milton Street Rydalmere, 33 & 35 John Street Rydalmere	50	48	43	59

Notes: 1. Day is the period from 7 am to 6 pm Monday to Saturday and 8 am to 6 pm Sunday and public holidays. Evening is the period from 6 pm to 10 pm. Night is the period from 10 pm to 7 am Monday to Saturday and 10 pm to 8 am Sunday and public holidays.

### 2.2 Meteorological conditions

Condition L3.2 of the EPL states the meteorological conditions which the noise limits apply under:

- L3.2 Noise-enhancing meteorological conditions:
- The noise limits set out in condition L3.1 apply under the meteorological conditions listed in the table below.
  - For those meteorological conditions not referred to in condition L3.2(a) table, the noise limits that apply are the noise limits in conditions L3.1 table plus 5 dB.

The table from Condition L3.2 is reproduced in Table 2.2 below.

**Table 2.2 Applicable meteorological conditions**

Assessment period	Meteorological conditions
Day	Stability Categories A, B, C and D with wind speeds up to and including 3 m/s at 10 m above ground level.
Evening	Stability Categories A, B, C and D with wind speeds up to and including 3 m/s at 10 m above ground level.
Night	Stability Categories A, B, C and D with wind speeds up to and including 3 m/s at 10 m above ground level; or Stability category E and F with wind speeds up to and including 2 m/s at 10 m above ground level.

Condition L3.4 specifies the source of meteorological data to be used and method for determining stability categories:

- L3.4 For the purpose of condition L3.2:
  - a) The meteorological conditions are to be determined from meteorological data obtained from the meteorological weather station identified as Bureau of Meteorology AWS at Sydney Olympic Park, NSW (Station no 066212).
  - b) Stability category shall be determined using the following method from Fact Sheet D of the Noise Policy for Industry (NSW EPA, 2017):
    - i. Use of sigma-theta data (section D1.4).

## 3 Assessment methodology

### 3.1 Attended noise monitoring

To quantify noise emissions from the site, 15-minute attended noise surveys were completed at monitoring locations to represent the range of locations referenced in Condition L3.1 of the site's EPL. Three attended noise monitoring locations were chosen to represent the most affected residences in proximity to the site, it is anticipated that any residences located further from the site would experience lesser or similar noise levels. The attended noise monitoring locations and their coordinates are listed in Table 3.1 and shown in Figure 3.1.

**Table 3.1** Attended noise monitoring locations

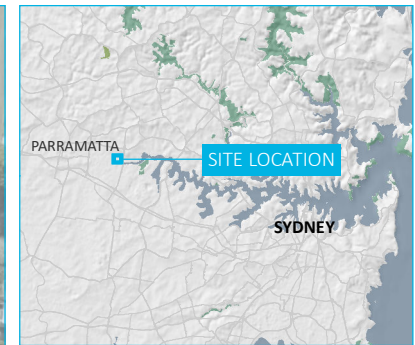
Monitoring location	Description	Location	GDA94/MGA56	
			Easting (m)	Northing (m)
A1	Approximately 200 m east of the site	530 John Street, Rydalmere	319369	6255948
A2	Approximately 225 m northeast of the site	45 John Street, Rydalmere	319319	6256051
A3	Approximately 260 m north of the site	24 Milton Street, Rydalmere	319230	6256149

### 3.2 Instrumentation

A Brüel & Kjær Type 2250 sound level meter (serial number 3008201) was used to conduct 15-minute attended measurements and record 1/3 octave band centre frequency and statistical noise indices. The sound analyser was calibrated before and on completion of the survey using a Svantek SV36 calibrator (s/n 86311). The instruments were within their NATA laboratory calibration period during the time of these readings. Refer to Appendix B for calibration certificates.



\\lemmsvr1\emms3\2021\E210583 - KLF Noise Monitoring\8 GIS\02 Maps\A001 - AttendedNoiseMonitoring\_202111029\_01.mxd 1/11/2021



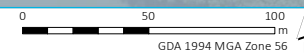
- KEY**
- Noise measurement location - attended
  - Site boundary
  - Named waterbody
- INSET KEY**
- Major road
  - NPWS reserve
  - State forest

Site locality and attended noise monitoring locations

KLF Holdings Camelia  
Quarterly noise compliance  
Figure 3.1



Source: EMM (2021); MetroMap (2021); DFSI (2017); GA (2011); ASGC (2006)





### 3.3 Weather conditions

Weather data for the monitoring period was sourced from the Bureau of Meteorology (BoM) Automated Weather Station (AWS) located at Sydney Olympic Park (Station ID 066212). Wind speeds are stated with reference to a height of 10 m above ground level (AGL).

The presence of temperature inversion conditions was determined for the monitoring period in accordance with the Sigma Theta method specified in Fact Sheet D of the NPfl (EPA 2017). Table 3.2 is an excerpt from Fact Sheet D of the NPfl (EPA 2017) showing the range of vertical temperature gradients for each Pasquill-Guilford stability category.

**Table 3.2 Stability categories and vertical temperature gradients**

Stability category	Range of vertical temperature gradient, DT/DZ (°C/100 m)
A	$DT/DZ < -1.9$
B	$-1.9 \leq DT/DZ < -1.7$
C	$-1.7 \leq DT/DZ < -1.5$
D	$-1.5 \leq DT/DZ < -0.5$
E	$-0.5 \leq DT/DZ < 1.5$
F	$1.5 \leq DT/DZ < 4.0$
G	$DT/DZ \geq 4.0$

Source: NPfl (EPA 2017).

### 3.4 Site operating hours

The site typically operates from 4:30 am to 4:30 pm Monday to Friday and from 5:00 am to 1:00 pm on Saturdays (closed Sundays), with hours extended when demand and processing is required.

## 4 Monitoring data and discussion

Attended noise monitoring results are summarised in Table 4.1.

The weather data confirmed that EPL meteorological criteria (Condition L3.2) were exceeded during 15 of the 24 attended measurements.

In accordance with the EPL, noise limits for those periods were those listed in Condition L3.1 plus 5 dB. Average wind speed, wind direction, cloud cover and stability category present during each 15-minute attended measurement are provided in Table 4.1.

During the periods that site was operational, typical activities included:

- Night (5:30 am to 7:00 am):
  - front end loader;
  - two excavators; and
  - trucks tipping/being loaded out.
- Day (7:00 am to 6:00 pm):
  - front end loader;
  - two excavators;
  - processing plant;
  - one excavator loading processing plant;
  - one excavator loading residual material out; and
  - trucks tipping/being loaded out.
- The site was not operational during the evening (6:00 pm to 10:00 pm).

Site operations were audible during all attended measurements in the night and day periods, including the constant hum of processing plant and “bangs” and “clangs” of material handling. Site contributions were estimated using a combination of operator observations at the time of measurement, filtering of extraneous noise and the application of a low pass filter in order to exclude extraneous higher frequency noise such as birdsong and insects. The site was not operating during the evening period on the days that monitoring took place.

Site contributions were compliant (below) EPL  $L_{Aeq,15min}$  or within 1 dB of the criterion during all attended day period measurements. A 1 to 2 dB exceedance is considered by the EPA as negligible in accordance with Section 4.2 of the NPfl (EPA 2017). This is because a 1 to 2 dB change in noise level in an environmental context is indiscernible to the human ear.

Typical  $L_{Amax}$  noise levels from the site were caused by “bangs” from the excavator bucket impacts and material handling. The EPL  $L_{Amax}$  noise limit was not breached for any the eight attended night period measurements.

Based on a detailed review and analysis of noise measurement data, there was no evidence of low frequency noise, tonality or any other modifying factors as defined in the NPfl (EPA 2017) at any monitoring location; therefore, modifying factor penalties were not applicable.

**Table 4.1**      **Attended noise monitoring results – Q2 2022, 14-15 June**

Location	Start time (period) <sup>1</sup>	Total noise levels, dB				Estimated site contribution, dB		EPL limits, dB		Meteorological conditions <sup>2</sup>	Exceedance, dB		Notes
		L <sub>Amin</sub>	L <sub>A90, 15min</sub>	L <sub>Aeq, 15min</sub>	L <sub>Amax</sub>	L <sub>Aeq, 15min</sub>	L <sub>Amax</sub>	L <sub>Aeq, 15min</sub>	L <sub>Amax</sub>		L <sub>Aeq, 15min</sub>	L <sub>Amax</sub>	
A1	5:38 am (Night)	50	51	52	61	43	56	43	59	2.1 m/s NW, Category D,	Nil	Nil	<b>Site audible. Persistent debris handling, scoop impacts and steady state industrial hum.</b> Other noise included hum of other industry and distant traffic (constant). Occasional local cars.
A1	5:53 am (Night)	50	52	53	65	43	57	43	59	2 m/s NW, Category D,	Nil	Nil	<b>Site audible. Persistent debris handling, scoop impacts and steady state industrial hum.</b> Other noise included hum of other industry and distant traffic (constant).
A2	6:10 am (Night)	51	53	55	70	44	59	43	59	2 m/s NW, Category D,	1	Nil	<b>Site audible. Persistent debris handling, scoop impacts and steady state industrial hum. Occasional reverse sirens.</b> Other noise included persistent birdsong (dominant), hum of other industry and distant traffic (constant).
A3	6:29 am (Night)	51	52	56	73	40	56	43	59	1.5 m/s NW, Category D,	Nil	Nil	<b>Site audible for 10 mins of measurement. Persistent debris handling, scoop impacts and steady state industrial hum.</b> Other noise included persistent birdsong (dominant), hum of other industry and distant traffic (constant). Aircraft and boat pass by.
A1	7:05 am (Day)	53	54	59	75	46	-	55 <sup>3</sup>	-	1.7 m/s NW, Category E,	Nil	-	<b>Site audible. Persistent debris handling, scoop impacts and steady state industrial hum.</b> Other noise included persistent birdsong (dominant), hum of other industry and distant traffic (constant).
A1	7:20 am (Day)	53	55	59	76	50	-	55 <sup>3</sup>	-	1 m/s NW, Category E,	Nil	-	<b>Site audible. Persistent debris handling, scoop impacts and steady state industrial hum.</b> Other noise included persistent birdsong (dominant), hum of other industry and distant traffic (constant). Boat and aircraft pass by.

**Table 4.1**      **Attended noise monitoring results – Q2 2022, 14-15 June**

Location	Start time (period) <sup>1</sup>	Total noise levels, dB				Estimated site contribution, dB		EPL limits, dB		Meteorological conditions <sup>2</sup>	Exceedance, dB		Notes
		L <sub>Amin</sub>	L <sub>A90, 15min</sub>	L <sub>Aeq, 15min</sub>	L <sub>Amax</sub>	L <sub>Aeq, 15min</sub>	L <sub>Amax</sub>	L <sub>Aeq, 15min</sub>	L <sub>Amax</sub>		L <sub>Aeq, 15min</sub>	L <sub>Amax</sub>	
A2	7:38 am (Day)	51	52	55	76	50	-	55 <sup>3</sup>	-	1 m/s NW, Category E,	Nil	-	<b>Site audible. Persistent debris handling, scoop impacts and steady state industrial hum.</b> Other noise included persistent birdsong (dominant), hum of other industry and distant traffic (constant). Aircraft pass by (64 dB).
A2	7:53 am (Day)	51	53	55	71	44	-	55 <sup>3</sup>	-	1.7 m/s NW, Category E,	Nil	-	<b>Site audible. Persistent debris handling, scoop impacts, brief alert siren and steady state industrial hum.</b> Other noise included persistent birdsong (dominant), hum of other industry and distant traffic (constant). Pass by traffic .
A3	8:12 am (Day)	50	51	56	81	47	-	55 <sup>3</sup>	-	1.7 m/s NW, Category E,	Nil	-	<b>Site audible. Persistent debris handling, scoop impacts and steady state industrial hum.</b> Other noise included persistent birdsong (dominant), hum of other industry and distant traffic (constant).
A3	8:27 am (Day)	48	50	55	69	46	-	50	-	2.2 m/s NW, Category D,	Nil	-	<b>Site audible. Persistent debris handling, scoop impacts and steady state industrial hum.</b> Other noise included persistent birdsong (dominant), hum of other industry and distant traffic (constant).
A1	6:21 pm (Evening)	49	51	53	61	n/a	-	53 <sup>3</sup>	-	Calm, Category G,	Nil	-	<b>Site not operating.</b> Other noise included constant hum of other industry, boat pass by and persistent and distant traffic (constant). Occasional local cars.
A2	6:38 pm (Evening)	48	51	53	67	n/a	-	53 <sup>3</sup>	-	Calm, Category G,	Nil	-	<b>Site not operating.</b> Other noise included constant hum of other industry, boat pass by and persistent and distant traffic (constant). Occasional local cars.

**Table 4.1**      **Attended noise monitoring results – Q2 2022, 14-15 June**

Location	Start time (period) <sup>1</sup>	Total noise levels, dB				Estimated site contribution, dB		EPL limits, dB		Meteorological conditions <sup>2</sup>	Exceedance, dB		Notes
		L <sub>Amin</sub>	L <sub>A90, 15min</sub>	L <sub>Aeq, 15min</sub>	L <sub>Amax</sub>	L <sub>Aeq, 15min</sub>	L <sub>Amax</sub>	L <sub>Aeq, 15min</sub>	L <sub>Amax</sub>		L <sub>Aeq, 15min</sub>	L <sub>Amax</sub>	
A1	5:33 am (Night)	49	50	52	64	45	64	48 <sup>3</sup>	64 <sup>3</sup>	Calm, Category G,	Nil	Nil	<b>Site audible. Persistent debris handling, scoop impacts and steady state industrial hum. Occasional reverse siren.</b> Other noise included persistent birdsong (dominant), hum of other industry and distant traffic (constant).
A1	5:49 am (Night)	50	51	52	63	45	57	48 <sup>3</sup>	64 <sup>3</sup>	Calm, Category G,	Nil	Nil	<b>Site audible. Persistent debris handling, scoop impacts and steady state industrial hum.</b> Other noise included persistent birdsong (dominant), hum of other industry and distant traffic (constant).
A2	6:06 am (Night)	51	52	55	70	45	60	48 <sup>3</sup>	64 <sup>3</sup>	Calm, Category G,	Nil	Nil	<b>Site audible. Persistent debris handling, scoop impacts and steady state industrial hum.</b> Other noise included persistent birdsong (dominant), hum of other industry and distant traffic (constant). Boat pass by (59 dB).
A3	6:24 am (Night)	50	51	55	69	40	55	43	59	Calm, Category F,	Nil	Nil	<b>Site audible. Persistent debris handling, scoop impacts and steady state industrial hum.</b> Other noise included persistent birdsong (dominant), hum of other industry and distant traffic (constant). Occasional local traffic.
A1	7:01 am (Day)	53	55	56	67	50	-	55 <sup>3</sup>	-	Calm, Category G,	Nil	-	<b>Site audible. Persistent debris handling, scoop impacts and steady state industrial hum. Occasional reverse sirens.</b> Other noise included persistent birdsong (dominant), hum of other industry and distant traffic (constant). Occasional local cars. Ferry pass by



**Table 4.1**      **Attended noise monitoring results – Q2 2022, 14-15 June**

Location	Start time (period) <sup>1</sup>	Total noise levels, dB				Estimated site contribution, dB		EPL limits, dB		Meteorological conditions <sup>2</sup>	Exceedance, dB		Notes
		L <sub>Amin</sub>	L <sub>A90, 15min</sub>	L <sub>Aeq, 15min</sub>	L <sub>Amax</sub>	L <sub>Aeq, 15min</sub>	L <sub>Amax</sub>	L <sub>Aeq, 15min</sub>	L <sub>Amax</sub>		L <sub>Aeq, 15min</sub>	L <sub>Amax</sub>	
A1	7:16 am (Day)	53	54	57	73	52	-	55 <sup>3</sup>	-	Calm, Category G,	Nil	-	<b>Site audible. Persistent debris handling, scoop impacts and steady state industrial hum. Occasional reverse sirens.</b> Other noise included persistent birdsong (dominant), hum of other industry and distant traffic (constant). Occasional local cars and ferry pass by.
A2	7:35 am (Day)	52	53	55	70	52	-	55 <sup>3</sup>	-	Calm, , Category G,	Nil	-	<b>Site audible. Persistent debris handling, scoop impacts and steady state industrial hum.</b> Other noise included persistent birdsong (dominant), hum of other industry, aircraft and distant traffic (constant).
A2	7:51 am (Day)	52	53	55	74	50	-	50	-	0.6 m/s NNW, Category C,	Nil	-	<b>Site audible. Persistent debris handling, scoop impacts and steady state industrial hum.</b> Other noise included persistent birdsong (dominant), ferry pass by, hum of other industry and distant traffic (constant).
A3	8:09 am (Day)	51	53	55	71	48	-	50	-	0.6 m/s NNW, Category C,	Nil	-	<b>Site audible. Persistent debris handling, scoop impacts. Steady state industrial hum is masked by local ambient noise.</b> Other noise included persistent birdsong (dominant), activity from other industry and distant traffic (constant). Occasional local traffic and aircrafts.
A3	8:26 am (Day)	51	52	55	68	40	-	50	-	1 m/s NNW, Category B,	Nil	-	<b>Site audible for 5 minutes of measurement. Persistent debris handling, scoop impacts. Steady state industrial hum is masked by local ambient noise.</b> Other noise included persistent birdsong (dominant), activity from other industry and distant traffic (constant). Occasional local traffic.

**Table 4.1**      **Attended noise monitoring results – Q2 2022, 14-15 June**

Location	Start time (period) <sup>1</sup>	Total noise levels, dB				Estimated site contribution, dB		EPL limits, dB		Meteorological conditions <sup>2</sup>	Exceedance, dB		Notes
		L <sub>Amin</sub>	L <sub>A90</sub> , 15min	L <sub>Aeq</sub> , 15min	L <sub>Amax</sub>	L <sub>Aeq</sub> , 15min	L <sub>Amax</sub>	L <sub>Aeq</sub> , 15min	L <sub>Amax</sub>		L <sub>Aeq</sub> , 15min	L <sub>Amax</sub>	
A1	6:09 pm (Evening)	47	49	52	72	n/a	-	53 <sup>3</sup>	-	0.4 m/s N, Category G,	Nil	-	<b>Site not operating.</b> Other noise included persistent birdsong (dominant), noise from other industry and distant traffic (constant). Occasional local cars.
A2	6:26 pm (Evening)	47	49	54	70	n/a	-	53 <sup>3</sup>	-	0.3 m/s N, Category E,	Nil	-	<b>Site not operating.</b> Other noise included persistent birdsong (dominant), noise from other industry and distant traffic (constant). Occasional local cars.

- Notes:
1. Day is the period from 7 am to 6 pm Monday to Saturday and 8 am to 6 pm Sunday and public holidays. Evening is the period from 6 pm to 10 pm. Night is the period from 10 pm to 7 am Monday to Saturday and 10 pm to 8 am Sunday and public holidays.
  2. Weather data for the monitoring period was sourced from the Bureau of Meteorology (BoM) Automated Weather Station (AWS) located at Sydney Olympic Park (Station ID 066212). Wind speeds are stated with reference to a height of 10 m above ground level (AGL).
  3. In accordance with Condition L3.2, where meteorological conditions exceed those specified in Condition L3.2, the EPL limits for these periods are those listed in Condition L3.1 plus 5 dB.

## 5 Conclusion

EMM has completed a review of operational noise from the KLF Holdings Camelia site for Quarter 2, 2022.

Attended noise monitoring was conducted during the day, evening and night periods on 14 and 15 June 2022. The applicability of noise limits was assessed with reference to weather data from the BoM's Sydney Olympic Park AWS.

The site was operational during all day and night period attended measurements. The site was not operational during the evening.

Attended noise monitoring observations and results demonstrate that operational noise from the site was audible during all attended measurements. Site contributions were demonstrated to be compliant during all but one of the 24 samples captured at residences. A 1 dB exceedance of an EPL criterion was measured during one daytime measurement. A 1 to 2 dB exceedance is considered by the EPA as negligible in accordance with Section 4.2 of the NPfl (EPA 2017).

Maximum  $L_{Amax}$  noise events measured from the site were compliant with the EPL  $L_{Amax}$  noise limits during all attended measurements at night.

# Glossary

Several technical terms are discussed in this report. These are explained in Table G.1.

**Table G.1** Glossary of acoustic terms

Term	Description
dB	Noise is measured in units called decibels (dB). There are several scales for describing noise, the most common being the 'A-weighted' scale. This attempts to closely approximate the frequency response of the human ear.
$L_{A1}$	The 'A-weighted' noise level which is exceeded 1% of the time.
$L_{A1,1 \text{ minute}}$	The 'A-weighted' noise level exceeded for 1% of the specified time period of 1-minute.
$L_{A10}$	The 'A-weighted' noise level which is exceeded 10% of the time. It is approximately equivalent to the average of maximum noise level.
$L_{A90}$	Commonly referred to as the background noise level. The 'A-weighted' noise level exceeded 90% of the time.
$L_{Aeq}$	The energy average noise from a source. This is the equivalent continuous 'A-weighted' sound pressure level over a given period. The $L_{Aeq,15 \text{ minute}}$ descriptor refers to an $L_{Aeq}$ noise level measured over a 15--minute period.
$L_{Amin}$	The minimum 'A-weighted' noise level received during a measuring interval.
$L_{Amax}$	The maximum root mean squared 'A-weighted' sound pressure level (or maximum noise level) received during a measuring interval.
$L_{Ceq}$	The equivalent continuous 'C-weighted' sound pressure level over a given period. The $L_{Ceq,15 \text{ minute}}$ descriptor refers to an $L_{Ceq}$ noise level measured over a 15-minute period. C-weighting can be used to measure low frequency noise.
Day period	Monday – Saturday: 7 am to 6 pm, on Sundays and Public Holidays: 8 am to 6 pm.
Evening period	Monday – Saturday: 6 pm to 10 pm, on Sundays and Public Holidays: 6 pm to 10 pm.
Night period	Monday – Saturday: 10 pm to 7 am, on Sundays and Public Holidays: 10 pm to 8 am.
Temperature inversion	A meteorological condition where the atmospheric temperature increases with altitude.
Vibration Dose Value (VDV)	Vibration Dose is a parameter that combines the magnitude of vibration and the time for which it occurs. VDV is a cumulative measurement of the vibration level received over a 15-hour or 9-hour period (Day and night).

It is useful to have an appreciation of the decibel (dB), the unit of noise measurement. Table G.2 gives an indication as to what an average person perceives about changes in noise levels in the environment. Examples of common noise levels are provided in Figure G.1.

**Table G.2**      **Perceived change in noise**

Change in sound pressure level (dB)	Perceived change in noise in surrounding environment
up to 2	not perceptible
3	just perceptible
5	noticeable difference
10	twice (or half) as loud
15	large change
20	four times (or quarter) as loud



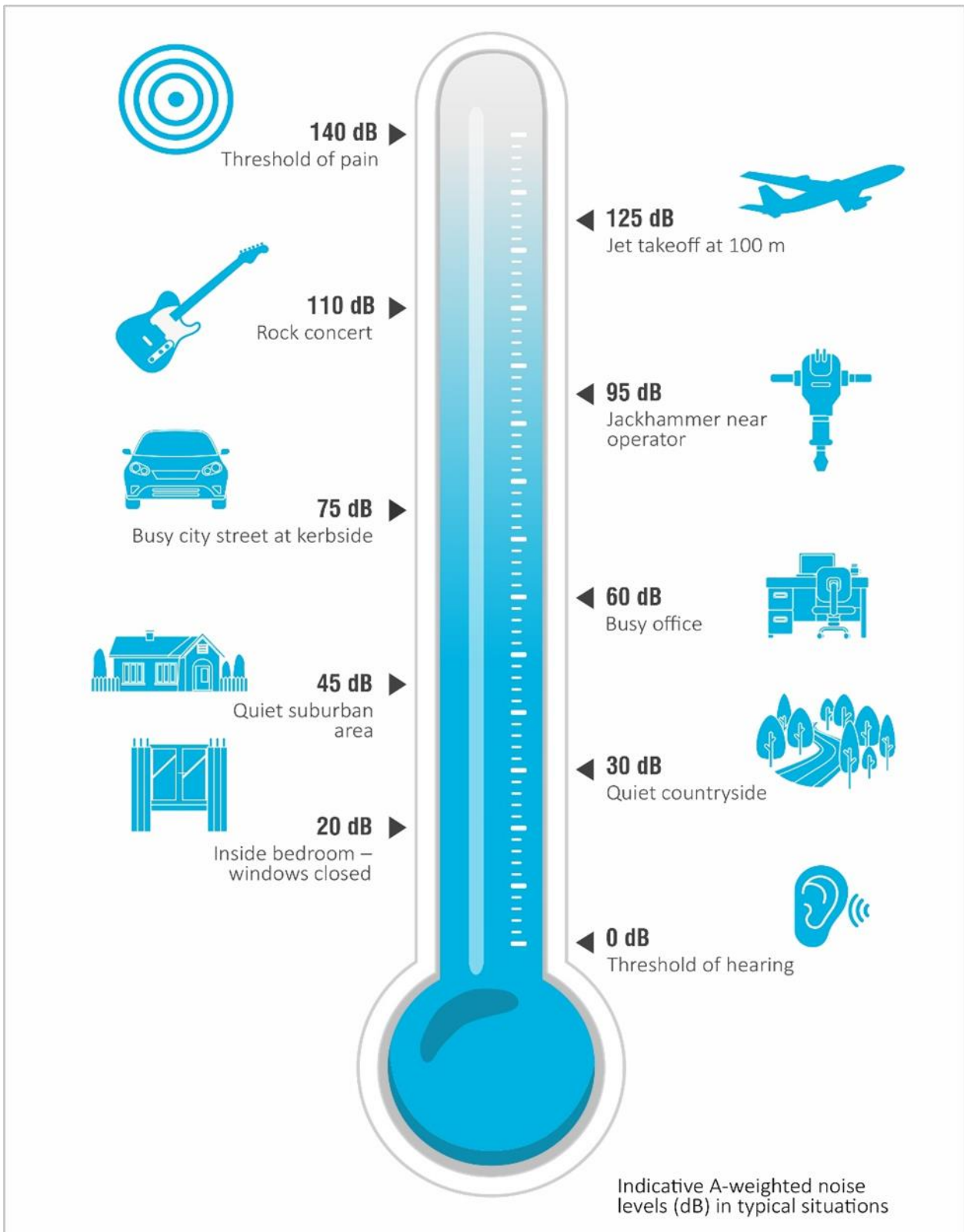


Figure G.1 Common noise levels

---

# Appendix A

EPL 12700

---

# Environment Protection Licence

Licence - 12700

the exception of the maximum threshold values for contaminants specified in the 'Other Limits' column

Petroleum Hydrocarbons C6-C9 150mg/kg; Petroleum Hydrocarbons C10-C36 1600mg/kg; Polycyclic aromatic hydrocarbons 80mg/kg; Polychlorinated biphenyls (individual) 1mg/kg. No Acid Sulfate Soil or Potential Acid Sulfate Soil is to be received at the Premises. Soil thresholds will be subject to review from time to time.

- L2.2 The height of any stockpile of waste or any processed substance must not exceed four (4) metres.
- L2.3 The licensee must install and maintain a visible permanent stockpile marker that shows the permitted height of stockpiles, being four metres.
- L2.4 The authorised amount of waste permitted on the premises cannot exceed 6,500 tonnes at any one time.
- L2.5 Any waste that is not listed in table L2.1, including asbestos waste, that is found after receipt at the premises must be:
- stored in an isolated and appropriately sign-posted area;
  - removed from the premises within one business day of receipt of the non-conforming waste to a place that can lawfully accept that type of waste; and
  - details (date, amount, type of waste, disposal location, disposal dated) must be logged in a register that is kept at the premises.

## L3 Noise limits

- L3.1 Noise generated at the premises must not exceed the noise limits (in dB(A)) at the times and locations in table below.

Location	Day	Evening	Night	Night
-	LAeq(15 minute)	LAeq(15 minute)	LAeq(15 minute)	LAFmax
523-530 John Street Rydalmere	50	48	43	59

# Environment Protection Licence

Licence - 12700

28 & 30 Sylvia Street Rydalmere, 33 Nowill Street Rydalmere	50	48	43	59
37-45 John Street Rydalmere	50	48	43	59
22 & 24 Milton Street Rydalmere, 33 & 35 John Street Rydalmere	50	48	43	59

## L3.2 Noise-enhancing meteorological conditions

- a) The noise limits set out in condition L3.1 apply under the meteorological conditions listed in table below.
- b) For those meteorological conditions not referred to in condition L3.2(a) table, the noise limits that apply are the noise limits in condition L3.1 table plus 5dB.

Assessment Period	Meteorological Conditions
Day	Stability Categories A, B, C and D with wind speeds up to and including 3m/s at 10m above ground level
Evening	Stability Categories A, B, C and D with wind speeds up to and including 3m/s at 10m above ground level
Night	Stability Categories A, B, C and D with wind speeds up to and including 3m/s at 10m above ground level; or Stability category E and F with wind speeds up to and including 2m/s at 10m above ground level.

## L3.3 For the purpose of condition L3.1;

- a) Day means the period from 7am to 6pm Monday to Saturday and the period from 8am to 6pm Sunday and public holidays.
- b) Evening means the period from 6pm to 10pm.
- c) Night means the period from 10pm to 7am Monday to Saturday and the period from 10pm to 8am Sunday and public holidays.

## L3.4 For the purposes of condition L3.2:

- a) The meteorological conditions are to be determined from meteorological data obtained from the meteorological weather station identified as Bureau of Meteorology AWS at Sydney Olympic Park, NSW (Station no 066212).
- b) Stability category shall be determined using the following method from Fact Sheet D of the *Noise Policy for Industry* (NSW EPA, 2017):
  - i. Use of sigma-theta data (section D1.4).

## L3.5 Noise measurements must not be undertaken where rain or wind speed at microphone level will affect the acquisition of valid measurements.

## L3.6 To assess compliance:

# Environment Protection Licence

Licence - 12700

a) with the LAeq(15mins) and LAmax noise limits in condition L3.1 and L3.2, the noise measurement equipment must be located:

(i) approximately on the property boundary, where any residence is situated 30 metres or less from the property boundary closest to the premises; or where applicable,

(ii) in an area within 30 metres of a residence façade, but not closer than 3 metres where any residence on the property is situated more than 30 meters from the property boundary closest to the premises; or, where applicable,

(iii) in an area within 50 metres of the boundary of a National park or a Nature Reserve,

(iv) at any other location identified in condition L3.1.

b) with the LAeq(15 minutes) or the LAmax noise limits in condition L3.1 and L3.3, the noise measurement equipment must be located:

(i) at the reasonably most affected point at a location where there is no residence at the location; or,

(ii) at the reasonably most affected point within an area at a location prescribed by condition L3.5(a).

L3.7 A non-compliance of conditions L3.1 and L3.2 will still occur where noise generated from the premises is measured in excess of the noise limit at a point other than the reasonably most affected point at the receiver locations referred to in conditions L3.6(a) or L3.6(b).

NOTE to Conditions L3.6 and L3.7. The reasonably most affected point is a point at a receiver location or within an area at a receiver location experiencing or expected to experience the highest sound pressure level from the premises.

L3.8 For the purposes of determining the noise generated from the premises, the modifying factor corrections in Table C1 in Fact Sheet C of the *Noise Policy for Industry* (NSW EPA, 2017) may be applied, if appropriate, to the noise measurements by the noise monitoring equipment.

Note: **Definition of Terms for noise limits**

- Noise Policy for Industry - the document entitled "*Noise Policy for Industry*" published by the NSW Environment Protection Authority in October 2017.

- Noise – 'sound pressure levels' for the purposes of conditions L3.1 to L3.8.

- LAeq (15 minute) - the value of the A-weighted sound pressure level of a continuous steady sound that, over a 15 minute time interval, has the same mean square sound pressure level as a sound under consideration with a level that varies with time (Australian Standard AS 1055:2018 *Acoustics: description and measurement of environmental noise*).

- LAFmax – the maximum sound pressure level of an event measured with a sound level meter satisfying Australian Standard AS IEC 61672.1-2013 *Electroacoustics - Sound level meters - Part 1: Specifications* set to 'A' frequency weighting and fast time weighting.

## L4 Hours of operation

L4.1 The hours of operation of the use of the premises is permitted 24 hours per day, Monday to Sunday, except those activities restricted by conditions L4.2 to L4.8.

### L4.2 **Truck Movement**

Between 10pm to 7am: A maximum of 8 truck movements per hour are permitted to deposit waste material on the premises.



---

# Appendix B

## Calibration certificates

---



# CERTIFICATE OF CALIBRATION

CERTIFICATE No: **SLM 30138**

**EQUIPMENT TESTED:** Sound Level Meter

**Manufacturer:** B & K

**Type No:** 2250

**Mic. Type:** B&K 4189

**Pre-Amp. Type:** ZC0032

**Serial No:** 3008201

**Serial No:** 2888134

**Serial No:** 16037

**Filter Type:** 1/3 Octave

**Test No:** FILT 6597

**Owner:** EMM Consulting

Ground Floor, Suite 01, 20 Chandos St  
St Leonards NSW 2065

**Tests** IEC 61672-3:2013,

**Performed:** IEC 1260:1995, & AS/NZS 4476:1997

**Comments:** All Test passed for Class 1. (See overleaf for details)

## CONDITIONS OF TEST:

**Ambient Pressure** 1001 hPa  $\pm 1$  hPa

**Temperature** 22  $^{\circ}\text{C} \pm 1^{\circ}\text{C}$



**Relative Humidity** 36 %  $\pm 5\%$

**Date of Receipt :** 23/07/2021

**Date of Calibration :** 26/07/2021

**Date of Issue :** 26/07/2021

**Acu-Vib Test Procedure:** AVP10 (SLM) & AVP06 (Filters)

**CHECKED BY:**  **AUTHORISED SIGNATURE:** 

*Hein Soe*

Accredited for compliance with ISO/IEC 17025 - Calibration  
Results of the tests, calibration and/or measurements included in this document are traceable to SI units through reference equipment that has been calibrated by the Australian National Measurement Institute or other NATA accredited laboratories demonstrating traceability.

This report applies only to the item identified in the report and may not be reproduced in part.

The uncertainties quoted are calculated in accordance with the methods of the ISO Guide to the Uncertainty of Measurement and quoted at a coverage factor of 2 with a confidence interval of approximately 95%.



**WORLD RECOGNISED  
ACCREDITATION**

Accredited Lab No. 9262  
Acoustic and Vibration  
Measurements

  
**Acu-Vib Electronics**  
CALIBRATIONS SALES RENTALS REPAIRS

Head Office & Calibration Laboratory  
Unit 14, 22 Hudson Ave. Castle Hill NSW 2154  
(02) 9680 8133  
www.acu-vib.com.au



# CERTIFICATE OF CALIBRATION

CERTIFICATE NO: C30881

EQUIPMENT TESTED : Sound Level Calibrator

**Manufacturer:** Svantek  
**Type No:** SV-36      **Serial No:** 86311  
**Owner:** EMM Consulting  
Suite 01, 20 Chandos St  
St Leonards NSW 2065

**Tests Performed:** Measured Output Pressure level, Frequency & Distortion  
**Comments:** See Details overleaf. All Test Passed.

Parameter	Pre-Adj	Adj Y/N	Output: (dB re 20 µPa)	Frequency (Hz)	THD&N (%)
Level1:	NA	N	94.05 dB	999.99 Hz	1.00 %
Level2:	NA	N	114.05 dB	999.99 Hz	1.00 %
Uncertainty			±0.11 dB	±0.05%	±0.20 %

Uncertainty (at 95% c.l.) k=2

#### CONDITION OF TEST:

**Ambient Pressure** 1002 hPa ±1 hPa      **Date of Receipt :** 20/10/2021  
**Temperature** 23 °C ±1° C      **Date of Calibration :** 20/10/2021  
**Relative Humidity** 41 % ±5%      **Date of Issue :** 20/10/2021

**Acu-Vib Test** AVP02 (Calibrators)  
**Procedure:** Test Method: AS IEC 60942 - 2017

**CHECKED BY:**       **AUTHORISED SIGNATURE:** 

Accredited for compliance with ISO/IEC 17025 - Calibration  
Results of the tests, calibration and/or measurements included in this document are traceable to SI units through reference equipment that has been calibrated by the Australian National Measurement Institute or other NATA accredited laboratories demonstrating traceability.

This report applies only to the item identified in the report and may not be reproduced in part.  
The uncertainties quoted are calculated in accordance with the methods of the ISO Guide to the Uncertainty of Measurement and quoted at a coverage factor of 2 with a confidence interval of approximately 95%.



WORLD RECOGNISED  
ACCREDITATION

Accredited Lab No. 9262  
Acoustic and Vibration  
Measurements

  
**Acu-Vib Electronics**  
CALIBRATIONS SALES RENTALS REPAIRS

Head Office & Calibration Laboratory  
Unit 14, 22 Hudson Ave. Castle Hill NSW 2154  
(02) 9680 8133  
www.acu-vib.com.au

## **Australia**

### **SYDNEY**

Ground floor 20 Chandos Street  
St Leonards NSW 2065  
T 02 9493 9500

### **NEWCASTLE**

Level 3 175 Scott Street  
Newcastle NSW 2300  
T 02 4907 4800

### **BRISBANE**

Level 1 87 Wickham Terrace  
Spring Hill QLD 4000  
T 07 3648 1200

### **CANBERRA**

Level 2 Suite 2.04  
15 London Circuit  
Canberra City ACT 2601

### **ADELAIDE**

Level 4 74 Pirie Street  
Adelaide SA 5000  
T 08 8232 2253

### **MELBOURNE**

Suite 8.03 Level 8 454 Collins  
Street  
Melbourne VIC 3000  
T 03 9993 1900

### **PERTH**

Suite 9.02 Level 9 109 St  
Georges Terrace  
Perth WA 6000

## **Canada**

### **TORONTO**

2345 Young Street Suite 300  
Toronto ON M4P 2E5

### **VANCOUVER**

60 W 6th Ave Suite 200  
Vancouver BC V5Y 1K1



[linkedin.com/company/emm-consulting-pty-limited](https://www.linkedin.com/company/emm-consulting-pty-limited)



[emmconsulting.com.au](http://emmconsulting.com.au)